

Local Climatological Data
Champaign-Urbana, IL - 118740

Illinois State Water Survey
Water Survey Research Center

January 2007

DATE	TEMPERATURE			PRECIP (in)	SNOW (in)		WEATHER TYPES	WIND				DEGREE DAYS	
	Max	Min	Mean	Amnt	Depth	Dir		Speed (mph)	Peak Gust	Gust Dir	Heat	Cool	
1	41	29	35	0.05	0.0	0	TRW,RW-,L-		M	M		30	0
2	44	26	35	T	T	0	RW-,SW-	S	3.4	13.0 S		30	0
3	47	30	39	0.00	0.0	0			M	M		26	0
4	48	37	43	0.00	0.0	0		S	8.6	21.0 S		22	0
5	50	46	48	0.50	0.0	0	RW,RW-,L,F(PM)	CALM	1.4	11.4 W		17	0
6	46	30	38	0.05	0.0	0	RW-,L,F(AM)		M	M		27	0
7	42	30	36	T	0.0	0	RW-		M	M		29	0
8	40	28	34	0.15	0.0	0	RW-	SW	5.1	27.2 W		31	0
9	37	25	31	T	0.0	0	RW-	NW	3.4	23.9 W		34	0
10	36	19	28	0.00	0.0	0		S	5.9	19.9 S		37	0
11	47	33	40	0.00	0.0	0		S	9.7	26.9 S		25	0
12	53	34	44	T	0.0	0	RW-,L-		M	M		21	0
13	36	34	35	0.93	0.0	0	RW, F	NE	6.2	18.0 NE		30	0
14	37	33	35	0.05	0.0	0	RW-, F		M	M		30	0
15	37	24	31	1.06	0.0	0	RW, F	NW	7.2	22.2 W		34	0
16	24	14	19	T	T	0	SW-	NW	5.0	18.2 NW		46	0
17	26	11	19	T	T	0	SW-		M	M		46	0
18	32	26	29	T	T	0	SW-	CALM	4.7	37.3 W		36	0
19	37	20	29	T	T	0	SW-	W	7.7	22.4 W		36	0
20	30	16	23	0.00	0.0	0		SE	3.0	13.0 N		42	0
21	32	27	30	0.17	2.2	2	SW		M	M		35	0
22	32	27	30	T	T	2	ZL	NW	6.0	16.0 NW		35	0
23	34	26	30	T	T	2	S-	W	9.0	21.1 SW		35	0
24	28	19	24	0.07	1.0	2	SW-	W	5.2	15.8 NW		41	0
25	27	14	21	T	T	2	S-	NW	5.9	19.3 NW		44	0
26	44	17	31	T	T	1	S-		M	M		34	0
27	38	17	28	0.00	0.0	0			M	M		37	0
28	18	7	13	T	T	T	S-		M	M		52	0
29	32	10	21	T	T	T	SW-	W	8.3	25.5 SW		44	0
30	22	8	15	T	0.1	T	SW-	W	10.9	28.4 W		50	0
31	23	4	14	T	T	T	S-	SW	5.9	15.6 SW		51	0
AVG/TOT	36.1	23.3	29.7	3.03	3.3			W	6.1			1087	0
DEP.	+4.1	+6.6	+5.3	+1.14	-5.3			W	-1.8			-172	0

NUMBER OF DAYS and DEPARTURE

	MAX TEMP		MIN TEMP		PRECIPITATION					SNOW
	>=90	<=32	<=32	<=0	>T	>=.01	>=.10	>=.50	>=1.00	>=1.0
TOTAL	0	12	25	0	25	9	5	3	1	2
DEP	0	-4	-4	-4	-1	0	+2	+1	-1	-1

	WEATHER TYPES										SEASONAL DEGREE DAYS		PRECIPITATION	
	R	L	S	Z	IP	A	T	F	D	H	BS	HEATING	COOLING	JAN-January
TOTAL	11	4	14	1	0	0	1	5	0	0	0	3158	0	3.03
DEP	+6	+1	+4	-1	0	0	+1					-341	0	+1.14

Averages based on 1971-2000 data. Temp midnight-midnight, Precip and Snow at 8 am LST M = Missing

WEATHER TYPES:

R = Rain Z = Freezing rain/drizzle D = Dust
L = Drizzle IP = Ice pellets (sleet) H = Haze
S = Snow A = Hail BS = Blowing snow
T = Thunder F = Fog RW = Rainshower SW = Snowshower

PRECIP INTENSITY

- Light Precip amount "T" =Trace
Moderate
+ Heavy

DEGREE DAYS Heat and Cool base 65F. Corn Growing base 50F, ceiling 86F. Heating DD season July-June. Cool and Corn DD season January-December.

WIND: DIR is the 24 hr prevailing direction (greatest number of hours). Speed is the daily average of 24 hourly average wind speeds.

Champaign-Urbana Weather Highlights – January 2007

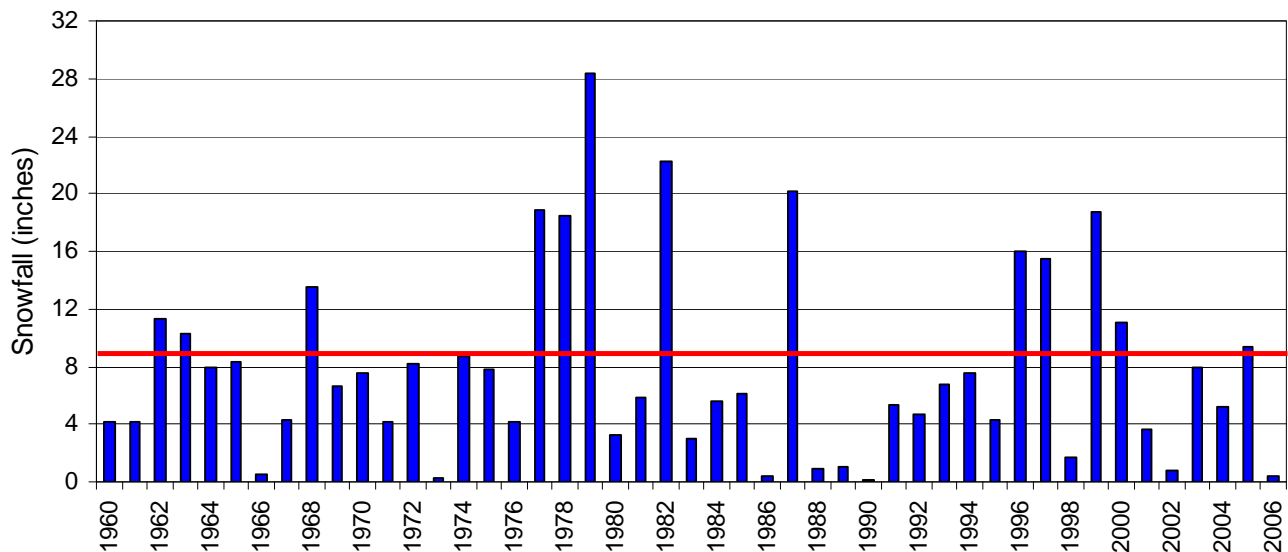
ILLINOIS STATE WATER SURVEY

Jim Angel, State Climatologist
2204 Griffith Drive
Champaign, IL 61820
jimangel@uiuc.edu

Temperature – ranged from 4°F on January 31 to 53°F on January 12. The average monthly high of 36.1°F was the 42nd warmest on record. The average monthly low of 23.3°F was the 21st warmest on record. The average monthly mean temperature of 29.7°F was the 31st warmest on record.

Precipitation – no daily records were set this month. The monthly precipitation total of 3.03” was 1.14” above normal and the 23rd wettest on record. On the other hand, the monthly snowfall total of 3.3” was the 23rd lowest snowfall total on record (tied with 1943 and 1931). Since snowfall records began in 1903, only January 1944 has received zero snowfall.

Champaign-Urbana January Snowfall
Red Line: 1971-2000 Average January Snowfall



Additional Information

Additional information for January can be found at the Illinois Climate Network site that is collocated with our cooperative weather observer site. This automated station collects temperature, wind, soil temperature, evaporation, humidity, and solar radiation data. These data are usually posted several days after the end of the month at: <http://www.sws.uiuc.edu/warm/data/2007/January/Champaign.txt>

JRA

The daily climate statistics are available by touch-tone phone. Call 333-8890 and select menu option 1. The recording is updated daily Monday through Friday by 8:30 a.m. For this and other climate data, visit the State Climatologist web site at <http://www.sws.uiuc.edu/atmos/statecli/>