

Local Climatological Data

Champaign-Urbana, IL - 118740

Illinois State Water Survey
Water Survey Research Center

November 2006

DATE	TEMPERATURE			PRECIP (in)	SNOW (in)		WEATHER TYPES	WIND				DEGREE DAYS		
	Max	Min	Mean		Amnt	Depth		Dir	Speed (mph)	Peak Gust	Gust Dir	Heat	Cool	
1	43	27	35	0.00	0.0	0		N	3.9	11.7	N	30	0	
2	41	22	32	0.00	0.0	0		W	5.9	26.4	W	33	0	
3	47	18	33	0.00	0.0	0		W	3.0	11.6	SW	32	0	
4	48	28	38	0.00	0.0	0		SE	5.0	19.3	SW	27	0	
5	55	39	47	0.04		0	RW-, IP-	S	4.6	15.6	SW	18	0	
6	57	44	51		T	0.0	0	RW-	SE	3.7	11.9	SE	14	0
7	56	49	53	0.14		0.0	0	RW-, L-	NW	1.5	6.8	E	12	0
8	64	42	53		T	0.0	0	L-, F(AM)	S	4.5	14.5	SW	12	0
9	72	47	60	0.00		0.0	0	F(AM)	NE	3.5	10.5	NE	5	0
10	71	39	55	0.00		0.0	0	F(AM)	N	7.5	26.0	NW	10	0
11	39	35	37	0.40		T	0	TRW, SW-	N	7.6	22.0	N	28	0
12	47	29	38		T	T	0	SW-	SE	3.2	13.2	SE	27	0
13	47	31	39	0.00		0.0	0	F(PM)		M	M	26	0	
14	44	41	43	0.05		0.0	0	RW-,L-,F	SE	2.6	10.9	SE	22	0
15	44	41	43	0.22		0.0	0	RW,RW-	NE	10.2	29.4	N	22	0
16	42	30	36	0.51		0.0	0	RW,RW-	N	11.6	33.5	N	29	0
17	41	29	35	0.41		0.0	0	RW	W	3.2	10.1	SW	30	0
18	41	33	37	0.00		0.0	0		N	3.4	12.3	NW	28	0
19	43	32	38	0.00		0.0	0		N	6.4	17.1	N	27	0
20	49	27	38	0.04		T	0	RW-,IP-,SW-		M	M	27	0	
21	51	24	38	0.00		0.0	0		SE	3.5	13.7	S	27	0
22	54	26	40	0.00		0.0	0		SE	2.4	12.6	SE	25	0
23	59	27	43	0.00		0.0	0		SE	2.1	8.1	SE	22	0
24	63	29	46	0.00		0.0	0		SE	3.9	15.6	SE	19	0
25	66	36	51	0.00		0.0	0		S	5.3	17.1	S	14	0
26	65	40	53	0.00		0.0	0		S	5.0	13.1	SW	12	0
27	63	48	56	0.00		0.0	0			M	M	9	0	
28	66	46	56	0.00		0.0	0		S	8.9	23.3	S	9	0
29	66	46	56	0.00		0.0	0		S	9.8	23.9	S	9	0
30	47	30	39	0.54		0.0	0	RW	N	6.3	21.1	N	26	0
AVG/TOT	53.0	34.5	43.8	2.35	0.0			SE	5.1			631	0	
DEP.	+3.4	+1.5	+2.5	-1.10		-2.1		S	-2.2			-80	0	

NUMBER OF DAYS and DEPARTURE

	MAX TEMP		MIN TEMP		PRECIPITATION					SNOW
	>=90	<=32	<=32	<=0	>T	>=.01	>=.10	>=.50	>=1.00	>=1.0
TOTAL	0	0	15	0	12	9	6	2	0	0
DEP	0	-2	0	0		-1	0	0	-1	-1

	WEATHER TYPES										SEASONAL DEGREE DAYS		PRECIPITATION	
	R	L	S	Z	IP	A	T	F	D	H	BS	HEATING	COOLING	JAN-November
TOTAL	10	3	3	0	2	0	1	5	0	0	0	1164	1064	33.20
DEP	+1	-2	-1	-1			0	+1				+22	+78	-5.09

Averages based on 1971-2000 data.

Temp midnight-midnight, Precip and Snow at 8 am LST

M = Missing

WEATHER TYPES:

- R = Rain Z = Freezing rain/drizzle D = Dust
- L = Drizzle IP = Ice pellets (sleet) H = Haze
- S = Snow A = Hail BS = Blowing snow
- T = Thunder F = Fog RW = Rainshower SW = Snowshower

PRECIP INTENSITY

- Light Precip amount "T" =Trace
- Moderate
- + Heavy

DEGREE DAYS Heat and Cool base 65F. Corn Growing base 50F, ceiling 86F. Heating DD season July-June. Cool and Corn DD season January-December.

WIND: DIR is the 24 hr prevailing direction (greatest number of hours). Speed is the daily average of 24 hourly average wind speeds.

Champaign-Urbana Weather Highlights – November 2006

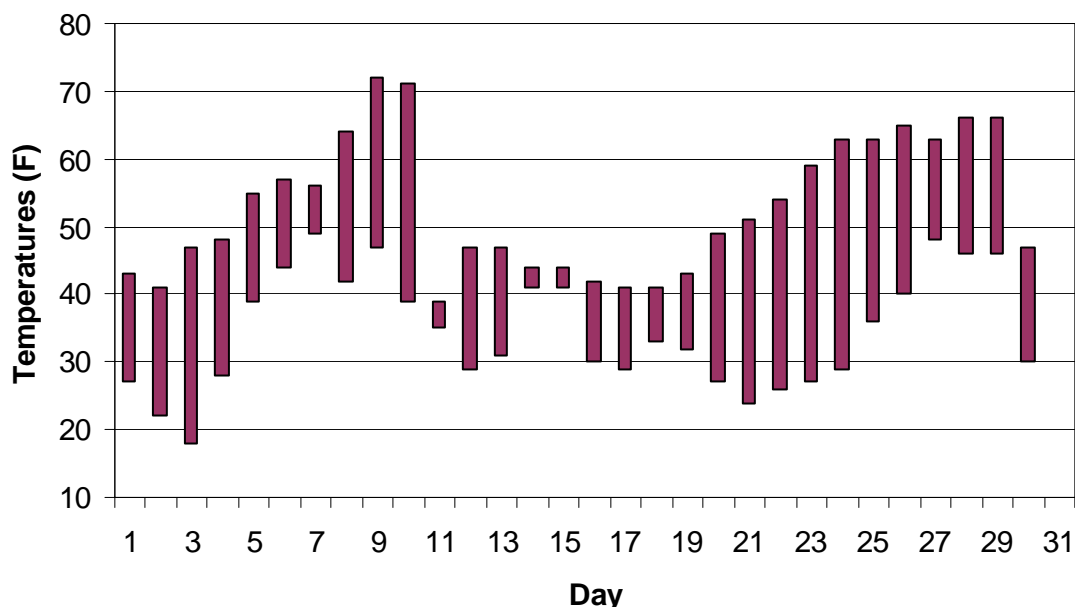
ILLINOIS STATE WATER SURVEY

Jim Angel, State Climatologist
2204 Griffith Drive
Champaign, IL 61820
jimangel@uiuc.edu

Temperature – ranged from 18°F on November 3 to 72°F on November 9. While the average monthly high, low, and mean temperatures were above average, none were ranked particularly high in terms of November records.

Precipitation – no daily records were set this month. The monthly precipitation total was 2.35”, 1.10” below normal. Historically, November monthly precipitation ranges from 0.00” in 1904 to 10.08” in 1985. Only a trace of snow was reported in November. Only about half of the November’s on record yielded measurable snow. The snowiest November was in 1932 when 11.2 inches fell.

Champaign-Urbana, November 2006
Daily Temperature Range



Additional Information

Additional information for November can be found at the Illinois Climate Network site that is collocated with our cooperative weather observer site. This automated station collects temperature, wind, soil temperature, evaporation, humidity, and solar radiation data. These data are usually posted several days after the end of the month at: <http://www.sws.uiuc.edu/warm/data/2006/November/Champaign.txt>

JRA

The daily climate statistics are available by touch-tone phone. Call 333-8890 and select menu option 1. The recording is updated daily Monday through Friday by 8:30 a.m. For this and other climate data, visit the State Climatologist web site at <http://www.sws.uiuc.edu/atmos/statecli/>