

CHAMPAIGN-URBANA 2006 ANNUAL WEATHER SUMMARY

ILLINOIS STATE WATER SURVEY

2204 Griffith Dr.

Champaign, IL 61820

wxobsrvr@sws.uiuc.edu

Jim Angel, state climatologist

Official Champaign-Urbana temperature and precipitation records began in August 1888, while snowfall records began in 1903. The site was first located at the Morrow Plots on the campus of the University of Illinois from 1888 until 1984, before moving to its present location at the Water Survey Research Center near the corner of First Street and Windsor Road. It was originally operated by the University of Illinois before being taken over by the Illinois State Water Survey in 1948. This station is part of the Cooperative Observer Network, operated by the National Weather Service (NWS). As such, we follow NWS observing practices and use NWS equipment. The records ultimately reside in the national archive at the National Climatic Data Center in Asheville, NC. Pictures of the site and weather instrumentation can be found at:

http://www.sws.uiuc.edu/atmos/statecli/Instruments/weather_instruments.htm

Monthly highlights can be found in the monthly weather summaries. For an archive of past reports, please see: <http://www.sws.uiuc.edu/atmos/statecli/Champ-Urb/CU.htm>

Annual: Annual precipitation for 2006 was 37.88" (3.17" below normal). The mean annual temperature for 2006 was 53.8°F (2.1°F above normal), making it the 9th warmest year on record (tied with 1991 and 1973). The snowfall for the snowfall season of October 2005 to April 2006 was 14.0", well below the 1971-2000 normal of 26.2". It ranks as the 22nd lowest snowfall on record.

2006 Annual Climate Summary for Champaign-Urbana

Month	Temperature (°F)					Precipitation		Degree Days			Wind (mph)		
	Avg Max	Avg Min	Avg Mean	High	Low	Total (in)	Snow (in)	Heat	Cool	Corn	Dir	Speed	Peak Gust
Jan	45.5	30.2	37.9	61	20	1.78	0.4	832	0		S	7.0	38.1
Feb	41.7	20.3	31.0	60	-1	0.52	0.2	948	0		NW	6.4	30.4
Mar	51.2	32.5	41.9	75	19	3.46	2.2	710	0		NE	6.6	37.6
Apr	68.1	45.1	56.6	83	28	4.41	0.0	263	17	302	NE	5.6	31.4
May	72.4	51.8	62.1	92	42	3.06	0.0	171	90	409	SW	3.7	21.1
Jun	82.3	60.4	71.4	94	52	1.65	0.0	10	209	636	NE	3.3	22.1
Jul	87.2	66.2	76.7	94	56	7.85	0.0	0	372	798	SW	3.4	22.0
Aug	82.9	65.1	74.0	94	58	3.00	0.0	0	287	741	NE	2.9	20.4
Sep	74.7	52.9	63.8	88	40	1.34	0.0	92	63	449	W	3.1	21.6
Oct	62.5	40.3	51.4	89	27	3.78	0.0	441	26		W	4.7	32.2
Nov	53.0	34.5	43.8	72	18	2.35	0.0	631	0		SE	5.1	33.5
Dec	43.5	27.5	35.5	61	5	4.68	0.5	907	0		S	6.1	24.1
2006	63.8	43.9	53.8	94	-1	37.88	3.3	5005	1064	3335	W	4.8	38.1
Depart	2.5	1.9	2.1			-3.17	-22.9	-820	78	130		-1.6	

Degree days: heating and cooling base 65°F. Corn Growing Degree Days base 50°F with a max temp cutoff at 86°F.
 Depart = Departures from the 1971-2000 30-year average.

NUMBER OF DAYS WITH:

Mon	Temperature				Precipitation				Snow	Weather Phenomena							
	>= 90°	<= 32°	<= 32°	<= 0°	>= 0.01	>= 0.10	>= 0.50	>= 1.00	>= 1.0	R	L	S	Z	IP	A	T	F
Jan	0	2	19	0	9	5	1	0	0	12	5	7	0	0	0	1	11
Feb	0	7	27	1	6	2	0	0	0	4	0	6	0	0	0	1	3
Mar	0	0	19	0	13	7	3	1	1	14	0	5	1	2	0	5	8
Apr	0	0	2	0	12	8	3	2	0	15	1	0	0	0	1	6	0
May	3	0	0	0	15	8	1	0	0	17	1	0	0	0	0	7	3
Jun	4	0	0	0	11	5	0	0	0	13	0	0	0	0	0	4	6
Jul	11	0	0	0	15	9	6	3	0	16	3	0	0	0	0	9	8
Aug	2	0	0	0	13	7	3	0	0	16	2	0	0	0	0	8	14
Sep	0	0	0	0	8	4	1	0	0	11	2	0	0	0	0	2	5
Oct	0	0	8	0	10	7	1	1	0	11	2	1	0	0	0	2	2
Nov	0	0	15	0	9	6	2	0	0	10	3	3	0	2	0	1	5
Dec	0	5	19	0	9	6	5	1	0	10	3	4	1	0	0	1	6
2006	20	14	109	1	130	74	26	8	1	149	22	26	2	4	1	47	71
Dep	0	-28	-10	-7	12	1	0	-3	-8	33	-13	-14	-7		-3	5	22

2006 GROWING SEASON SUMMARY

Season	Mean Temp (°F)	Depart* from Average	Precip (in)	Depart* from Average	Snowfall (in)	Depart* from Average
Winter**	31.2	3.3	4.16	-2.5	11.8	-8.4
Spring	53.5	2.0	10.93	-0.73	2.2	-1.6
Summer	74.0	0.7	12.50	-0.75		
Fall	53.0	-0.9	7.47	-2.01	0	-2.2

CHAMPAIGN – URBANA EXTREMES

Month	Temperature (°F)								Winds			
	2006		Period of Record		2006		Period of Record		2006		1989-2006	
	High Max	Date	High Max	Date	Low Min	Date	Low Min	Date	Peak Gust	Date	Peak Gust	Date
Jan	61	2	70	23/1909	20	26	-25	05/1999-t	38.1	24	44.3	11/1990
Feb	60	16	72	25/2000	-1	18	-25	13/1905-t	30.4	16	55.2	11/1999
Mar	75	31	85	24/1910-t	19	22	-5	17/1906	37.6	31	58.9	15/1990
Apr	83	13	95	17/1894	28	9	15	02/1899	31.4	7	49.7	18/1995
May	92	10	97	31/1934	42	3,4	26	01/1903	21.1	13	45.1	9/1990
Jun	94	21	103	25/1988-t	52	12	34	06/1894	17.0	13	47.9	8/1993
Jul	94	2,3,31	109	14/1954	56	6	41	02/1904	22.0	1	38.5	28/1999
Aug	94	1,2	102	17/1988	58	21,22	37	30/1893-t	20.4	9	39.4	9/1995
Sep	88	17	102	05/1899	40	29	24	30/1899	21.6	17	45.8	8/1989
Oct	89	2,3	93	03/1954	27	15	12	30/1895	32.2	30	44.8	30/1996
Nov	72	9	80	01/1950	18	3	-5	25/1950	33.5	16	51.4	21/1994
Dec	61	31	71	04/1998	5	8	-20	24/1983-t	24.1	26	48.4	15/1992
Annual	94	06/21	109	07/14/1954	-1	02/18	-25	01/19/1994	38.1	01/24	58.9	03/15/1990

Month	Daily Precipitation Extremes								Monthly Precipitation Extremes					
	2006		Period of Record		2006		1903-2006		Period of Record					
	Max 24-hour Precip	Date	Max 24-hour Precip	Date	Max 24-hour Snow	Date	Max 24-hour Snow	Date	High Precip	Year	Low Precip	Year	High Snowfall	Year
Jan	0.69	29	2.43	26/1967	0.2	14	11.4	31/1982	7.62	1950	0.06	1986-t	28.3	1979
Feb	0.30	16	2.30	22/1990	0.1	11,12	11.0	21/1912	6.05	1990	0.15	1947	18.5	1914-t
Mar	1.05	12	2.93	13/1917	1.6	21	14.0	20/1906	8.35	1922	0.38	1910	32.0	1906
Apr	1.22	7	3.09	20/1964	0.0	-	6.0	5/1920	9.55	1964	0.50	1899	8.0	1920
May	0.75	19	4.50	26/1921	0.0	-	2.5	2/1929	11.20	1943	0.22	1925	2.5	1929
Jun	0.44	26	3.89	19/1983					11.58	1902	0.32	1988		
Jul	1.81	13	4.43	30/1987					13.82	1992	0.47	1930-t		
Aug	0.77	19	5.32	12/1993					10.02	1993	0.06	1893		
Sep	0.62	18	3.91	15/1931					9.76	1926	0.06	1891		
Oct	2.15	17	3.72	21/1983	0.0	-	2.8	19/1989	9.01	1941	0.16	1964	3.3	1989
Nov	0.54	30	4.07	02/1936	0.0	0	9.1	27/1980	10.08	1985	0.00	1904	11.2	1932
Dec	1.26	1	2.97	13/1901	0.5	1	9.5	19/1973	6.63	1967	0.05	1890	19.1	1983
Annual	2.15	10/27	5.32	08/12/1993	1.6	03/21	14.0	03/20/1906	58.54	1993	18.28	1894	51.9	1977

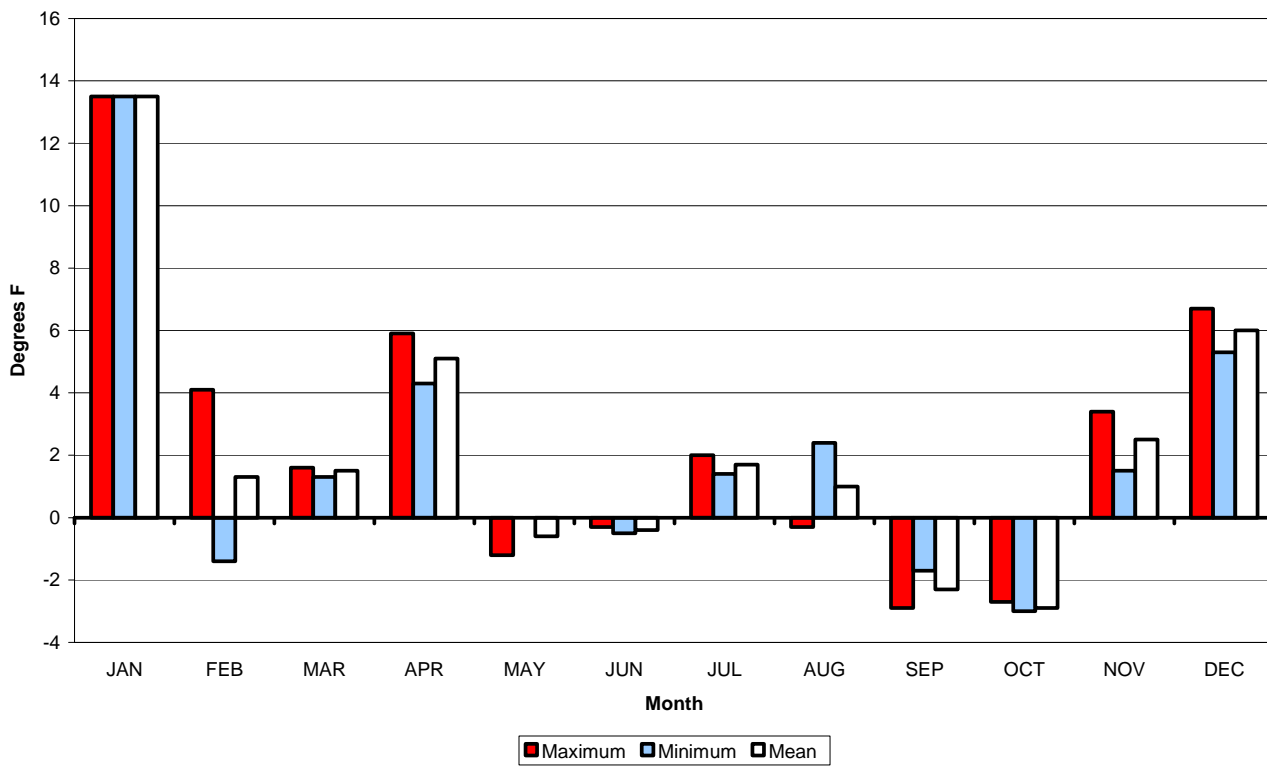
SEASONAL STATISTICS

Last 32°F temperature in spring:	April 9 (28°F)
First 32°F temperature in fall:	October 11 (31°F)
Length of growing season:	185 days (+7)
Growing season precipitation (4/1-9/30):	21.31 inches (-3.61 inches)
Total growing season Corn GDD (4/1-9/30):	3,141 (-67)

*All climatological averages based on 1971-2000 data

**December 2005 – February 2006

**2006 Monthly Temperatures
Departures from Average**



**2006 Monthly Precipitation & Snowfall
Departure from Average**

