

CHAMPAIGN-URBANA 2005 ANNUAL WEATHER SUMMARY

ILLINOIS STATE WATER SURVEY

2204 Griffith Dr.

Champaign, IL 61820

wxobsrvr@sws.uiuc.edu

Jim Angel, state climatologist

Official Champaign-Urbana temperature and precipitation records began in August 1888, while snowfall records began in 1903. The site was first located at the Morrow Plots on the campus of the University of Illinois from 1888 until 1984, before moving to its present location at the Water Survey Research Center near the corner of First Street and Windsor Road. It was originally operated by the University of Illinois before being taken over by the Illinois State Water Survey in 1948. This station is part of the Cooperative Observer Network, operated by the National Weather Service (NWS). As such, we follow NWS observing practices and use NWS equipment. The records ultimately reside in the national archive at the National Climatic Data Center in Asheville, NC. Pictures of the site and weather instrumentation can be found at:

http://www.sws.uiuc.edu/atmos/statecli/Instruments/weather_instruments.htm

Monthly highlights can be found in the monthly weather summaries. For an archive of past reports, please see: <http://www.sws.uiuc.edu/atmos/statecli/Champ-Urb/CU.htm>

Annual: Annual precipitation for 2005 was 36.38" (4.67" below normal). The mean annual temperature for 2005 was 53.3°F (1.6°F above normal), making it the 14th warmest year on record (tied with 1922). The snowfall for the snowfall season of October 2004 to April 2005 was 13.4", well below the 1971-2000 normal of 26.2". It ranks as the 19th lowest snowfall on record.

2005 ANNUAL CLIMATE SUMMARY FOR CHAMPAIGN-URBANA

Month	Temperature (°F)					Precipitation		Degree Days			Wind (mph)		
	Avg Max	Avg Min	Avg Mean	High	Low	Total (in)	Snow (in)	Heat	Cool	Corn	Dir	Speed	Peak Gust
Jan	34.6	21.0	27.8	63	-1	6.20	9.4	1147	0		N	5.9	30.0
Feb	42.1	27.3	34.7	65	17	2.00	2.1	843	0		NW	5.6	28.4
Mar	48.3	28.4	38.4	75	15	1.73	0.2	820	0		NW	6.8	36.1
Apr	67.0	42.3	54.7	82	33	3.98	0.0	308	8	274	NE	6.2	30.5
May	74.3	48.4	61.4	87	31	0.97	0.0	152	46	415	W	4.6	29.6
Jun	86.2	63.7	75.0	95	54	2.42	0.0	0	308	704	S	3.7	31.7
Jul	86.6	65.5	76.1	95	56	4.30	0.0	0	350	781	NE	3.1	33.7
Aug	85.9	65.7	75.8	96	56	2.26	0.0	0	340	769	NE	4.9	20.6
Sep	83.4	58.4	70.9	96	39	5.66	0.0	27	214	607	SE	2.8	21.1
Oct	66.6	45.1	55.9	88	31	1.28	0.0	315	38		NE	3.2	18.9
Nov	54.0	33.4	43.7	71	15	3.72	0.0	631	0		S	7.8	28.5
Dec	31.4	18.2	24.8	52	1	1.86	11.2	1236	0		W	5.2	27.5
2005	63.4	43.1	53.3	96	-1	36.38	22.9	5479	1304	3550	W	5.0	36.1
Depart	2.1	1.1	1.6			-4.67	-3.3	-346	318	345		-1.4	

Degree days: heating and cooling base 65°F. Corn Growing Degree Days base 50°F with a max temp cutoff at 86°F.
 Depart = Departures from the 1971-2000 30-year average.

NUMBER OF DAYS WITH:

Mon	Temperature				Precipitation				Snow	Weather Phenomena							
	>= 90°	<= 32°	<= 32°	<= 0°	>= 0.01	>= 0.10	>= 0.50	>= 1.00	>= 1.0	R	L	S	Z	IP	A	T	F
Jan	0	14	25	1	17	10	6	1	4	8	0	14	1	0	0	1	1
Feb	0	4	22	0	10	4	1	0	0	6	5	8	2	1	0	1	3
Mar	0	1	22	0	7	4	2	0	0	7	2	7	1	0	0	1	0
Apr	0	0	0	0	8	6	2	1	0	9	7	1	0	0	0	3	3
May	0	0	2	0	5	2	1	0	0	11	0	0	0	0	0	3	0
Jun	16	0	0	0	6	3	1	1	0	12	0	0	0	0	0	7	0
Jul	8	0	0	0	10	10	3	1	0	16	0	0	0	0	0	0	0
Aug	10	0	0	0	10	3	1	1	0	11	2	0	0	0	0	2	1
Sep	9	0	0	0	7	7	4	2	0	9	1	0	0	0	0	7	7
Oct	0	0	2	0	7	2	1	1	0	8	1	0	0	0	0	1	5
Nov	0	2	13	0	7	6	3	1	0	8	0	4	0	0	0	1	2
Dec	0	17	26	0	12	4	1	0	4	6	3	18	2	2	0	1	10
2005	43	38	112	1	106	61	26	9	8	111	21	52	6	3	0	28	32
Dep	23	-4	-7	-7	-12	-12	0	-2	-1	-5	-14	12	-3		-4	-14	-17

2005 GROWING SEASON SUMMARY

Season	Mean Temp (°F)	Depart* from Average	Precip (in)	Depart* from Average	Snowfall (in)	Depart* from Average
Winter**	31.5	3.6	10.22	3.56	11.9	-8.3
Spring	51.5	0.0	6.68	-4.98	0.2	-3.6
Summer	75.6	2.3	8.98	-4.27		
Fall	56.8	2.9	10.66	1.18	0	-2.2

CHAMPAIGN – URBANA EXTREMES

Temperature and precipitation periods of record 1888 to 2005 (t – indicates a tie with the most recent record given).

Month	Temperature (°F)								Winds			
	2005		Period of Record		2005		Period of Record		2005		1989-2005	
	High Max	Date	High Max	Date	Low Min	Date	Low Min	Date	Peak Gust	Date	Peak Gust	Date
Jan	63	12	70	23/1909	-1	18	-25	05/1999-t	30.0	18	44.3	11/1990
Feb	65	15	72	25/2000	17	2,18	-25	13/1905-t	28.4	14	55.2	11/1999
Mar	75	30	85	24/1910-t	15	3	-5	17/1906	36.1	31	58.9	15/1990
Apr	82	10,18	95	17/1894	33	24	15	02/1899	30.5	11	49.7	18/1995
May	87	10	97	31/1934	31	3,4	26	01/1903	29.6	13	45.1	9/1990
Jun	95	7,24	103	25/1988-t	54	18	34	06/1894	31.7	13	47.9	8/1993
Jul	95	25	109	14/1954	56	2,28,29	41	02/1904	33.7	21	38.5	28/1999
Aug	96	11	102	17/1988	56	24	37	30/1893-t	20.6	20	39.4	9/1995
Sep	96	13	102	05/1899	39	30	24	30/1899	21.1	28	45.8	8/1989
Oct	88	4	93	03/1954	31	28,30	12	30/1895	18.9	17	44.8	30/1996
Nov	71	3,8	80	01/1950	15	17,25	-5	25/1950	28.5	24	51.4	21/1994
Dec	52	31	71	04/1998	1	7	-20	24/1983-t	27.5	8,16	48.4	15/1992
Annual	96	09/13	109	07/14/1954	-1	01/18	-25	01/19/1994	36.1	03/31	58.9	03/15/1990

Month	Daily Precipitation Extremes								Monthly Precipitation Extremes					
	2005		Period of Record		2005		1903-2005		Period of Record					
	Max 24-hour Precip	Date	Max 24-hour Precip	Date	Max 24-hour Snow	Date	Max 24-hour Snow	Date	High Precip	Year	Low Precip	Year	High Snowfall	Year
Jan	1.45	13	2.43	26/1967	3.3	14	11.4	31/1982	7.62	1950	0.06	1986-t	28.3	1979
Feb	0.88	14	2.30	22/1990	0.9	9	11.0	21/1912	6.05	1990	0.15	1947	18.5	1914-t
Mar	0.83	23	2.93	13/1917	0.1	1,11	14.0	20/1906	8.35	1922	0.38	1910	32.0	1906
Apr	1.98	21	3.09	20/1964	0.0	-	6.0	5/1920	9.55	1964	0.50	1899	8.0	1920
May	0.75	19	4.50	26/1921	0.0	-	2.5	2/1929	11.20	1943	0.22	1925	2.5	1929
Jun	1.62	14	3.89	19/1983					11.58	1902	0.32	1988		
Jul	1.07	22	4.43	30/1987					13.82	1992	0.47	1930-t		
Aug	1.02	19	5.32	12/1993					10.02	1993	0.06	1893		
Sep	1.67	16	3.91	15/1931					9.76	1926	0.06	1891		
Oct	1.05	21	3.72	21/1983	0.0	-	2.8	19/1989	9.01	1941	0.16	1964	3.3	1989
Nov	1.33	1	4.07	02/1936	0.0	0	9.1	27/1980	10.08	1985	0.00	1904	11.2	1932
Dec	0.81	29	2.97	13/1901	5.6	9	9.5	19/1973	6.63	1967	0.05	1890	19.1	1983
Annual	1.98	04/21	5.32	08/12/1993	5.6	12/09	14.0	03/20/1906	58.54	1993	18.28	1894	51.9	1977

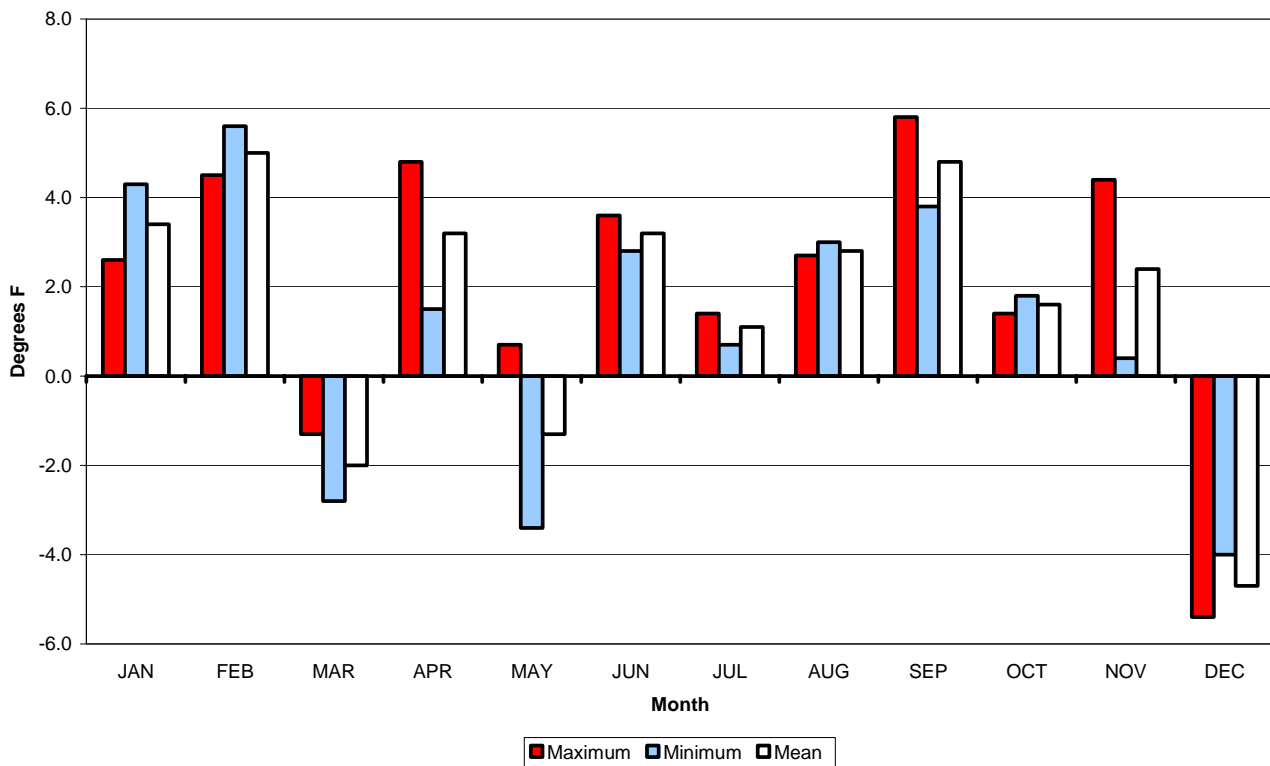
SEASONAL STATISTICS

Last 32°F temperature in spring:	May 4 (31°F)
First 32°F temperature in fall:	October 28 (31°F)
Length of growing season:	177 days (-1)
Growing season precipitation (4/1-9/30):	19.59 inches (-5.33 inches)
Total growing season Corn GDD (4/1-9/30):	3,550 (345)

*All climatological averages based on 1971-2000 data

**December 2004 – February 2005

**2005 Monthly Temperatures
Departures from Average**



2005 Monthly Precipitation & Snowfall Departure from Average

