

Local Climatological Data  
Champaign-Urbana, IL - 118740

Illinois State Water Survey  
Water Survey Research Center

April 2004

DATE	TEMPERATURE			PRECIP (in)	SNOW (in)		WEATHER TYPES	WIND				SKY COVER	DEGREE DAYS		
	Max	Min	Mean		Amnt	Depth		Dir	Speed (mph)	Peak Gust	Gust Dir		Heat	Cool	Corn
1	49	36	43	0.00	0.0	0		N	6.4	14.5	N	PC	22	0	0
2	57	36	47	0.00	0.0	0		N	7.5	19.4	NW	CLR	18	0	4
3	64	34	49	0.00	0.0	0		NW	8.3	27.9	NW	CLR	16	0	7
4	52	32	42	0.00	0.0	0		N	6.9	18.0	NW	CLR	23	0	1
5	57	30	44	0.00	0.0	0		SE	3.2	12.1	SE	CLR	21	0	4
6	71	36	54	T	0.0	0	RW-	SW	7.0	19.7	SW	PC	11	0	11
7	75	49	62	0.00	0.0	0		W	3.7	11.5	W	PC	3	0	13
8	60	40	50	0.00	0.0	0		NW	8.3	22.9	NW	PC	15	0	5
9	61	36	49	0.00	0.0	0		NE	2.6	10.3	N	PC	16	0	6
10	57	42	50	0.00	0.0	0		NW	3.9	17.0	N	PC	15	0	4
11	55	35	45	0.00	0.0	0		NE	8.7	20.4	NE	CLR	20	0	3
12	49	33	41	0.00	0.0	0		NE	11.0	23.8	N	PC	24	0	0
13	52	31	42	0.00	0.0	0		N	10.0	28.4	N	CLR	23	0	1
14	67	32	50	0.00	0.0	0		NW	3.1	12.9	N	CLR	15	0	9
15	72	40	56	0.00	0.0	0		S	9.1	27.9	S	CLR	9	0	11
16	81	50	66	0.00	0.0	0		S	8.3	19.9	S	CLR	0	1	16
17	85	60	73	0.00	0.0	0		SW	9.0	18.9	SW	CLR	0	8	23
18	85	57	71	0.00	0.0	0		S	14.4	35.9	S	CLR	0	6	21
19	79	54	67	0.00	0.0	0		SW	11.7	27.7	SW	PC	0	2	17
20	71	52	62	0.94	0.0	0	TRW+,RW	S	7.4	20.1	S	CLDY	3	0	12
21	69	51	60	T	0.0	0	RW-	SW	8.8	24.4	W	PC	5	0	10
22	52	43	48	0.40	0.0	0	R,RW-	NE	5.8	16.2	NE	CLDY	17	0	1
23	67	41	54	0.00	0.0	0		NE	3.7	14.0	NE	CLDY	11	0	9
24	63	49	56	0.26	0.0	0	RW	E	3.8	13.6	SE	PC	9	0	7
25	64	46	55	0.06	0.0	0	RW-	SW	9.4	28.7	W	CLDY	10	0	7
26	65	41	53	0.00	0.0	0		W	6.4	26.7	W	CLR	12	0	8
27	56	39	48	0.00	0.0	0		NW	5.4	23.3	N	CLR	17	0	3
28	77	41	59	0.01	0.0	0	TRW,RW-	S	13.6	37.9	S	PC	6	0	14
29	74	54	64	T	0.0	0	RW-	S	8.1	21.1	SW	PC	1	0	14
30	76	48	62	0.21	0.0	0	RW-	SW	5.7	17.0	S	CLDY	3	0	13
<b>AVG/TOT</b>	<b>65.4</b>	<b>42.3</b>	<b>53.9</b>	<b>1.88</b>	<b>0.0</b>			<b>N</b>	<b>7.4</b>				<b>345</b>	<b>17</b>	<b>254</b>
<b>DEP.</b>	<b>+3.2</b>	<b>+1.5</b>	<b>+2.4</b>	<b>-1.77</b>	<b>-0.5</b>			<b>S</b>	<b>-0.5</b>				<b>-67</b>	<b>+9</b>	<b>+48</b>

NUMBER OF DAYS and DEPARTURE

	MAX TEMP				MIN TEMP				PRECIPITATION					SNOW	SKY COVER		
	>=90	<=32	<=32	<=0	>	>=.01	>=.10	>=.50	>=1.00	>=1.0	CLR	PC	CLDY				
TOTAL	0	0	4	0	9	6	4	1	0	0	13	12	5				
DEP	0	0	-1	0	-6	-4	-1	-1	0	+5	+3	-8					

	WEATHER TYPES											SEASONAL DEGREE DAYS			PRECIPITATION
	R	L	S	Z	IP	A	T	F	D	H	BS	HEATING	COOLING	CORN	JAN-April
TOTAL	9	0	0	0	0	0	1	0	0	0	5260	17	381	12.36	
DFF	-4	-4	-2				-1	-4	-3		-403	+9	+74	+1.60	

Averages based on 1971-2000 data. The daily sky condition is determined by the prevailing sky condition of three observations made between 7am and 7pm LST. Snow depth at 7am LST. All other data midnight-midnight. M = Missing

WEATHER TYPES:

R = Rain  
L = Drizzle  
S = Snow  
T = Thunder  
Z = Freezing rain/drizzle  
IP = Ice pellets (sleet)  
A = Hail  
F = Fog  
D = Dust  
H = Haze  
BS = Blowing snow  
RW = Rainshower  
SW = Snowshower

PRECIP INTENSITY

- Light  
Moderate  
+ Heavy  
Precip amount "T" = Trace

DEGREE DAYS Heat and Cool base 65F. Corn Growing base 50F, ceiling 86F. Heating DD season July-June. Cool and Corn DD season January-December.

# Champaign-Urbana Weather Highlights – April 2004

## ILLINOIS STATE WATER SURVEY

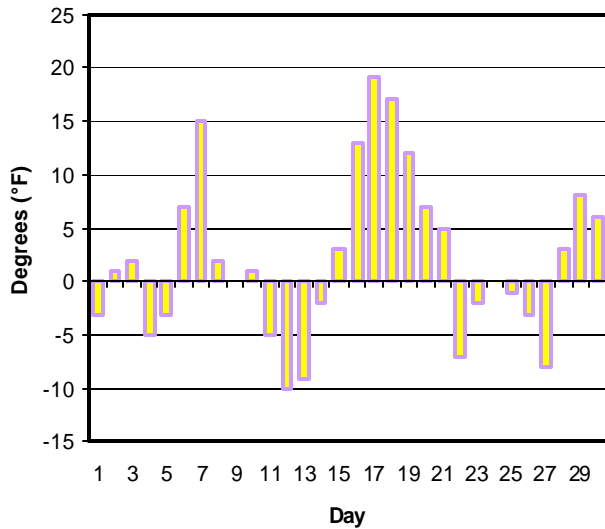
Maria Peters, Weather Observer  
 2204 Griffith Drive  
 Champaign, IL 61820  
 wxobsrvr@sws.uiuc.edu

Following a wet end to March, the first weeks of April 2004 were quite a contrast, with no measurable precipitation falling during the first 19 days of the month. Later showers brought the monthly total to 1.88 inches, which ranks April 2004 as the 18<sup>th</sup> driest April on record. The driest April occurred in 1899 when only a half-inch of precipitation fell and the wettest April occurred in 1964 when 9.55 inches fell. No new precipitation records were set or tied during April 2004.

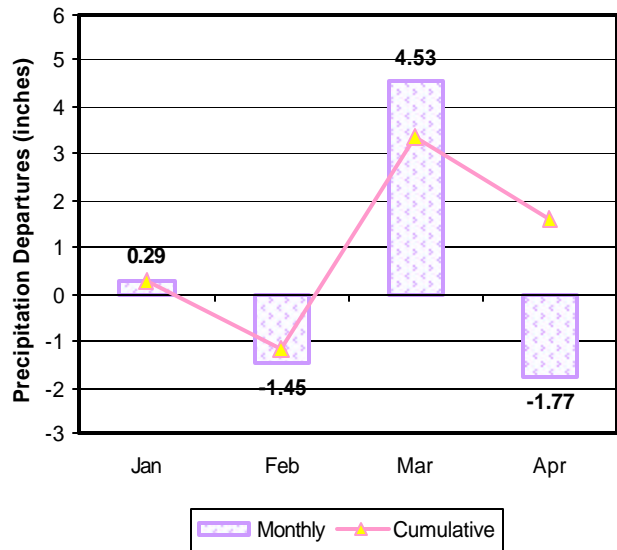
Although the typical snow season for Champaign-Urbana runs from October to April, the majority of Aprils do not receive any measurable snowfall. In fact, during the past 102 years of recorded snowfall statistics, 67 Aprils (including 2004) reported zero. Also during the typical snow season, the area receives 26.2 inches of snowfall, while this year we only received 16.2 inches. This below average total tied us with 1954 - 1955 as the 27<sup>th</sup> lowest season since 1903. While this might seem like a snow drought, it was well above the barren season of 1953 - 1954, when only 6.7 inches of snow fell.

The monthly average temperature of 53.9° Fahrenheit tied April 2004 with 1921 and 1970 as the 19<sup>th</sup> warmest April on record. No new temperature records were set or tied during the month, despite daily temperature values of almost 20 degrees above average at times. One item of note however was that Champaign-Urbana did hit its first 80 degree day for the year on April 16<sup>th</sup>. This was well ahead of the median date for the 1<sup>st</sup> 80 degree day of May 3<sup>rd</sup>. The earliest the area ever reached 80° occurred on March 21<sup>st</sup>, 1907 and the latest we ever reached the 80° mark was on May 31<sup>st</sup>, 1995. And, assuming that we do not dip down to or below 32° Fahrenheit again during this spring, we also saw our last frost on April 14<sup>th</sup>, 2004. This was almost exactly on the normal last spring frost date of April 15<sup>th</sup>. The latest the last spring frost has ever occurred was on May 27<sup>th</sup>, 1895, so it is still possible this last spring frost date isn't final!

**April 2004 Mean Daily Temperature Departure from Normal**



**2004 Monthly Precipitation Departures from Normal**



MCP

The daily climate statistics are available by touch-tone phone. Call 333-8890 and select menu option 1. The recording is updated daily Monday through Friday by 8:00 a.m. For this and other climate data, visit the State Climatologist web site at <http://www.sws.uiuc.edu/atmos/statecli/>