

Local Climatological Data  
Champaign-Urbana, IL - 118740

Illinois State Water Survey  
Water Survey Research Center

March 2003

DATE	TEMPERATURE			PRECIP (in)	SNOW (in)		WEATHER TYPES	WIND				SKY COVER	DEGREE DAYS	
	Max	Min	Mean		Amnt	Depth		Dir	Speed (mph)	Peak Gust	Gust Dir		Heat	Cool
1	35	30	33	0.07	0.1	T	R-,L-,S-,F	SW	3.4	11.7	W	CLDY	32	0
2	33	19	26	0.01	0.4	0	S-	NW	6.0	19.5	NW	CLDY	39	0
3	35	17	26	T	T	T	S-	S	7.8	22.2	S	PC	39	0
4	46	31	39	0.06	0.0	0	R-,RW-	SW	5.2	13.8	N	PC	26	0
5	34	21	28	0.15	0.5	T	R-,S-,IP-,ZR-	N	7.6	21.5	NE	CLDY	37	0
6	35	19	27	0.01	0.2	T	SW-	NE	5.5	18.9	N	PC	38	0
7	46	26	36	0.00	0.0	0		S	6.1	17.7	SW	PC	29	0
8	64	21	43	0.00	0.0	0		SE	9.2	28.3	SW	PC	22	0
9	24	13	19	T	T	0	SW-	NW	8.0	19.6	W	CLR	46	0
10	27	9	18	0.00	0.0	0		W	4.5	15.6	NW	PC	47	0
11	47	18	33	0.00	0.0	0		S	8.0	22.7	SW	CLR	32	0
12	64	40	52	T	0.0	0	RW-,L-,F	SW	3.9	13.9	SW	PC	13	0
13	54	30	42	1.11	0.0	0	TRW+,RW-,F	N	8.2	25.7	NE	CLDY	23	0
14	58	27	43	0.00	0.0	0		SE	3.1	10.8	SE	CLR	22	0
15	64	36	50	0.00	0.0	0	F	S	5.0	13.6	S	CLDY	15	0
16	72	38	55	0.00	0.0	0	F	S	5.2	20.1	S	PC	10	0
17	74	44	59	0.00	0.0	0	F	SE	2.6	11.1	S	PC	6	0
18	73	49	61	0.03	0.0	0	R-,L-,F	NE	6.8	20.4	NE	CLDY	4	0
19	67	44	56	0.21	0.0	0	RW,RW-	NE	6.4	19.8	SE	CLDY	9	0
20	73	46	60	0.04	0.0	0	T,RW-	SE	5.5	32.3	SW	CLDY	5	0
21	52	40	46	T	0.0	0	RW-	NW	7.8	26.9	W	PC	19	0
22	58	38	48	0.00	0.0	0		W	6.6	20.5	NW	PC	17	0
23	67	36	52	0.00	0.0	0	F	SE	2.1	13.7	W	CLR	13	0
24	75	41	58	0.00	0.0	0		SW	8.0	25.7	SW	CLR	7	0
25	60	40	50	0.10	0.0	0	RW,RW-	N	5.8	21.8	NE	PC	15	0
26	65	32	49	0.00	0.0	0		W	5.3	20.3	W	PC	16	0
27	67	39	53	0.00	0.0	0		SE	8.3	26.5	S	CLR	12	0
28	65	37	51	0.24	0.0	0	RW,RW-	W	12.8	37.4	S	CLDY	14	0
29	42	31	37	0.05	T	0	RW-,SW-,IP-	NW	6.8	22.7	W	CLDY	28	0
30	44	26	35	T	T	0	SW-	N	4.2	16.3	NW	PC	30	0
31	58	30	44	T	0.0	0	RW-	SW	8.9	25.6	S	CLR	21	0
<b>AVG/TOT</b>	<b>54.1</b>	<b>31.2</b>	<b>42.7</b>	<b>2.08</b>	<b>1.2</b>			<b>S</b>	<b>6.3</b>				<b>686</b>	<b>0</b>
<b>DEP.</b>	<b>+4.5</b>	<b>0.0</b>	<b>+2.3</b>	<b>-1.13</b>	<b>-2.1</b>			<b>S</b>	<b>-1.7</b>				<b>-79</b>	<b>0</b>

NUMBER OF DAYS and DEPARTURE

	MAX TEMP				MIN TEMP				PRECIPITATION					SNOW	SKY COVER		
	>=90	<=32	<=32	<=0	>	>=.01	>=.10	>=.50	>=1.00	>=1.0	CLR	PC	CLDY				
TOTAL	0	2	17	0	18	12	5	1	1	0	7	14	10				
DEP	0	-1	-1	0	+1	-2	-1	0		-1	0	+5	-5				

	WEATHER TYPES											SEASONAL DEGREE DAYS		PRECIPITATION
	R	L	S	Z	IP	A	T	F	D	H	BS	HEATING	COOLING	JAN-March
TOTAL	13	3	8	1	2	0	2	9	0	0	0	5364	0	4.47
DFF	+3	-1	+2	0	-1	-1	+5					+113	0	-2.64

Averages based on 1971-2000 data. The daily sky condition is determined by the prevailing sky condition of three observations made between 7am and 7pm LST. Snow depth at 7am LST. All other data midnight-midnight. M = Missing

WEATHER TYPES:

R = Rain  
L = Drizzle  
S = Snow  
T = Thunder  
Z = Freezing rain/drizzle  
IP = Ice pellets (sleet)  
A = Hail  
F = Fog  
D = Dust  
H = Haze  
BS = Blowing snow  
RW = Rainshower  
SW = Snowshower

PRECIP INTENSITY

- Light  
Moderate  
+ Heavy  
Precip amount "T" = Trace

DEGREE DAYS Heat and Cool base 65F. Corn Growing base 50F, ceiling 86F. Heating DD season July-June. Cool and Corn DD season January-December.

# Champaign-Urbana Weather Highlights – March 2003

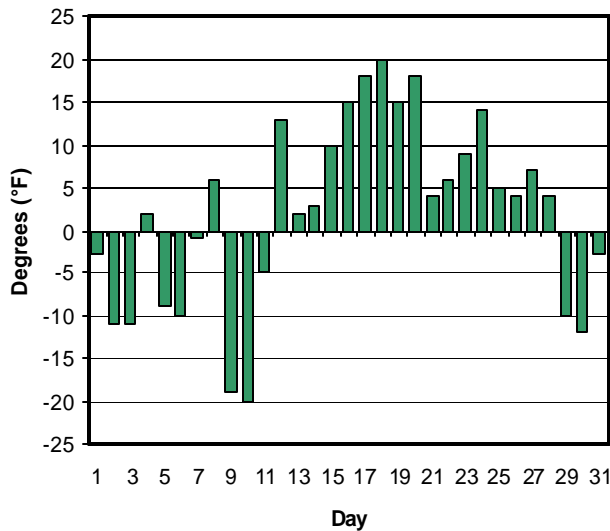
## ILLINOIS STATE WATER SURVEY

Maria Peters, Weather Observer  
2204 Griffith Drive  
Champaign, IL 61820  
wxobsrvr@sws.uiuc.edu

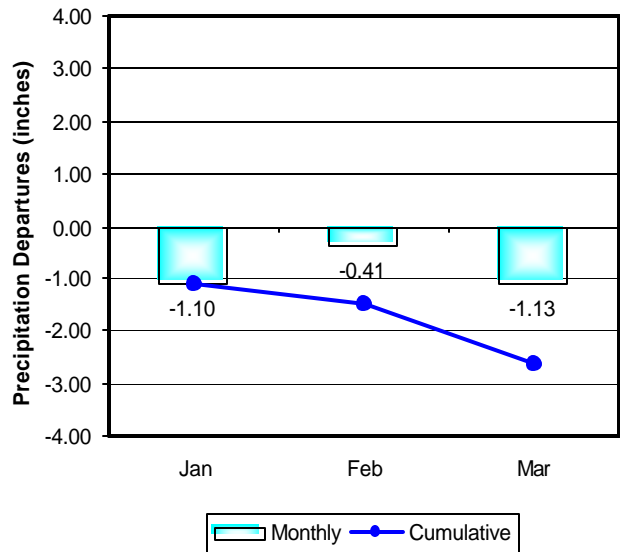
March 2003 was the 22<sup>nd</sup> warmest March since the official record began in 1888. And, despite days with temperature departures of 20° above and below average, no new temperature records were tied or set.

March 2003 was 1.13 inches of precipitation below average and was the 40<sup>th</sup> driest March on record. This continues the string of months with below average precipitation, going back to November 2002. Since then, we are down 4.21 inches of precipitation. The snowfall total of 1.2 inches ranked this March as the 11<sup>th</sup> lowest snowfall amount since 1903. However, this number is slightly misleading because there are 15 years tied for 1<sup>st</sup> with no measurable snowfall.

**March 2003 Mean Daily Temperature Departure from Normal**



**2003 Monthly Precipitation Departures from Normal**



MCP

The daily climate statistics are available by touch-tone phone. Call 333-8890 and select menu option 1. The recording is updated daily Monday through Friday by 8:00 a.m. For this and other climate data, visit the State Climatologist web site at <http://www.sws.uiuc.edu/atmos/statecli/>