

Local Climatological Data
Champaign-Urbana, IL - 118740

Illinois State Water Survey
Water Survey Research Center

October 2002

DATE	TEMPERATURE			PRECIP (in)	SNOW (in)		WEATHER TYPES	WIND				SKY COVER	DEGREE DAYS	
	Max	Min	Mean		Amnt	Depth		Dir	Speed (mph)	Peak Gust	Gust Dir		Heat	Cool
1	87	65	76	0.00	0.0	0	F(AM)	SW	5.0	15.5	SW	PC	0	11
2	89	67	78	T	0.0	0	RW-,F(AM)	SW	4.4	15.0	W	PC	0	13
3	83	64	74	T	0.0	0	RW-,F(AM)	SE	2.0	6.9	W	CLDY	0	9
4	75	56	66	0.71	0.0	0	R,RW-	S	7.7	29.9	W	CLDY	0	1
5	70	47	59	0.00	0.0	0		NW	2.2	11.8	NW	CLR	6	0
6	69	44	57	T	0.0	0	RW-	SW	5.6	18.7	W	PC	8	0
7	59	38	49	0.00	0.0	0		NW	1.9	11.8	NW	CLR	16	0
8	66	39	53	0.00	0.0	0		S	2.1	11.0	SW	CLDY	12	0
9	71	46	59	0.00	0.0	0		CALM	1.0	5.9	S	CLDY	6	0
10	72	46	59	0.00	0.0	0		E	1.3	8.6	SE	PC	6	0
11	78	50	64	0.00	0.0	0		NE	2.0	10.9	E	PC	1	0
12	75	51	63	0.14	0.0	0	RW-	SW	3.5	16.9	N	CLDY	2	0
13	52	34	43	0.00	0.0	0		NW	3.8	15.6	N	CLR	22	0
14	63	31	47	0.00	0.0	0		SE	2.3	15.6	E	CLR	18	0
15	65	32	49	0.00	0.0	0		N	3.3	13.4	W	CLR	16	0
16	54	36	45	0.00	0.0	0		N	3.0	11.8	NE	PC	20	0
17	51	38	45	T	0.0	0	RW-	SW	3.3	15.0	W	CLDY	20	0
18	70	33	52	0.95	0.0	0	TRW+,RW-	SW	8.6	31.8	SW	PC	13	0
19	57	39	48	0.08	0.0	0	RW-	NW	3.3	16.4	SW	CLR	17	0
20	55	34	45	0.00	0.0	0		N	1.7	8.1	N	CLR	20	0
21	61	35	48	0.00	0.0	0		CALM	2.1	9.5	S	CLR	17	0
22	53	37	45	0.00	0.0	0		N	3.0	10.9	N	CLDY	20	0
23	50	38	44	T	0.0	0	RW-	NE	3.4	11.3	NE	CLDY	21	0
24	56	41	49	T	0.0	0	RW-	NE	3.4	11.1	NE	CLDY	16	0
25	46	40	43	0.67	0.0	0	R,R-,L-	NE	2.5	9.1	E	CLDY	22	0
26	50	45	48	T	0.0	0	RW-,L-	NW	2.5	9.4	W	CLDY	17	0
27	52	42	47	T	0.0	0	RW-,L-	NE	2.7	11.3	NE	PC	18	0
28	57	40	49	0.00	0.0	0		NE	3.8	14.0	E	PC	16	0
29	46	39	43	0.59	0.0	0	R,R-	NE	7.3	19.9	NE	CLDY	22	0
30	48	38	43	0.02	0.0	0	RW-	NE	3.5	13.4	N	CLDY	22	0
31	52	35	44	0.01	0.0	0	RW-	NW	3.7	15.7	NW	PC	21	0
AVG/TOT	62.3	42.6	52.5	3.17	0.0			NE	3.4				415	34
DEP.	-2.9	-0.7	-1.8	+0.36	-0.1			SW	-2.2				+69	+25

NUMBER OF DAYS and DEPARTURE

	MAX TEMP				MIN TEMP				PRECIPITATION					SNOW	SKY COVER		
	>=90	<=32	<=32	<=0	>	>=.01	>=.10	>=.50	>=1.00	>=1.0	CLR	PC	CLDY				
TOTAL	0	0	2	0	16	8	5	4	0	0	8	10	13				
DEP	0	0	-2	0		-1	0	+2	-1	0	-4	+2	+2				

	WEATHER TYPES											SEASONAL DEGREE DAYS		PRECIPITATION
	R	L	S	Z	IP	A	T	F	D	H	BS	HEATING	COOLING	JAN-October
TOTAL	16	3	0	0	0	0	1	2	0	0	0	439	1332	37.08
DFF	+6	-1				0	-1	-2				+8	+346	+2.24

Averages based on 1971-2000 data. The daily sky condition is determined by the prevailing sky condition of three observations made between 7am and 7pm LST. Snow depth at 7am LST. All other data midnight-midnight M = Missin

WEATHER TYPES:

R = Rain Z = Freezing rain/drizzle D = Dust
L = Drizzle IP = Ice pellets (sleet) H = Haze
S = Snow A = Hail BS = Blowing snow
T = Thunder F = Fog RW = Rainshower SW = Snowshower

PRECIP INTENSITY

- Light Precip amount "T" =Trace
Moderate
+ Heavy

DEGREE DAYS Heat and Cool base 65F. Corn Growing base 50F, ceiling 86F. Heating DD season July-June. Cool and Corn DD season January-December.

Champaign-Urbana Weather Highlights – October 2002

ILLINOIS STATE WATER SURVEY

Maria Peters, Weather Observer
 2204 Griffith Drive
 Champaign, IL 61820
 wxobsrvr@sws.uiuc.edu

With only seven days at above average temperatures, October 2002 finished as the 21st coolest October since 1888. The month began with record setting warmth.

- ⚡ On October 2nd, the minimum temperature of 67 degrees Fahrenheit surpassed the old record high minimum temperature for that date of 66 degrees set in 1971.
- ⚡ Also on October 2nd, the mean temperature of 78 degrees Fahrenheit broke the old record high mean temperature of 77 degrees set in 1971.

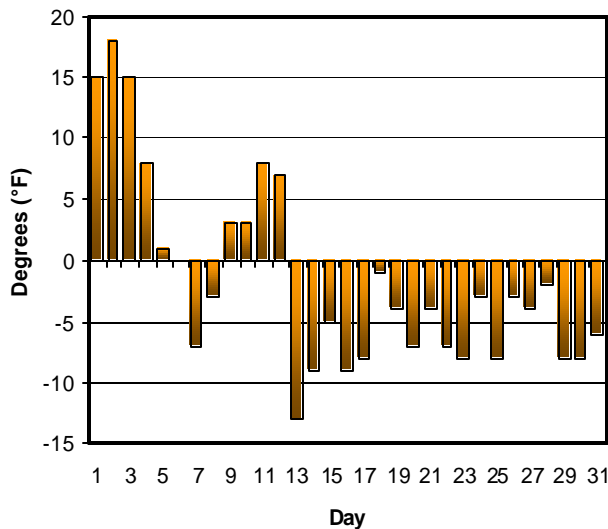
The first fall frost occurred on October 14th, when the minimum temperature reached 31 degrees Fahrenheit.

October 2002 finished with above average precipitation, ranking it as tied with 1922 as the 33rd wettest October on record. There was one precipitation record broken during the month.

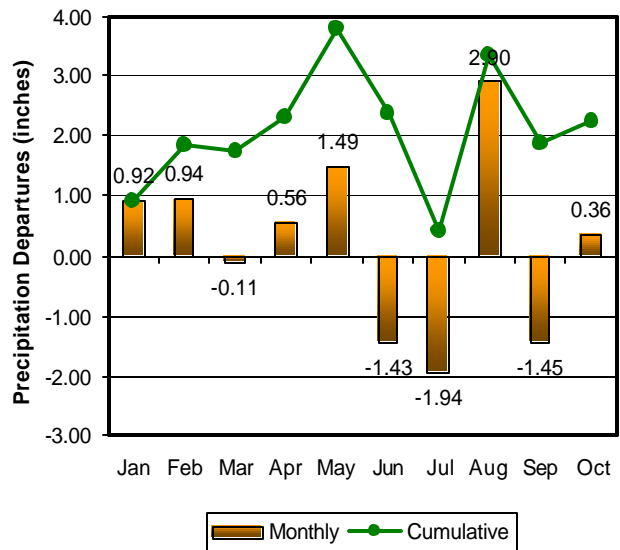
- The daily precipitation total of 0.59 inches on October 29th topped the old precipitation record of 0.56 inches set in 1921.

No measurable snowfall was reported during October 2002. In fact, since snowfall records began in 1903, there have only been seven Octobers in the Champaign-Urbana area with measurable snowfall. Based on those numbers, you would not expect to see flakes covering the ground in October. Yet, the current 1971-2000 average snowfall for October is 0.1 inches. This average value is the result of a 3.3 inch total that was reported in 1989, which was the only year in that 30-year time period that had measurable snowfall.

October 2002 Mean Daily Temperature Departure from Normal



2002 Monthly Precipitation Departures from Normal



MCP

The daily climate statistics are available by touch-tone phone. Call 333-8890 and select menu option 1. The recording is updated daily Monday through Friday by 8:00 a.m. For this and other climate data, visit the State Climatologist web site at <http://www.sws.uiuc.edu/atmos/statecli/>