

Local Climatological Data  
Champaign-Urbana, IL - 118740

Illinois State Water Survey  
Water Survey Research Center

June 2002

DATE	TEMPERATURE			PRECIP (in)	SNOW (in)		WEATHER TYPES	WIND				SKY COVER	DEGREE DAYS		
	Max	Min	Mean		Amnt	Depth		Dir	Speed (mph)	Peak Gust	Gust Dir		Heat	Cool	Corn
1	89	66	78	0.04	0.0	0	TRW,RW-	W	5.2	21.9	W	PC	0	13	26
2	86	65	76	0.00	0.0	0		E	2.8	11.9	SE	PC	0	11	26
3	91	65	78	0.00	0.0	0		SW	5.4	18.2	S	PC	0	13	26
4	91	67	79	0.44	0.0	0	TRW+,A(1/4")	SW	6.6	21.8	NW	CLDY	0	14	27
5	69	58	64	0.26	0.0	0	TRW,RW-	N	4.1	12.6	NW	CLDY	1	0	14
6	65	55	60	0.00	0.0	0	H	N	3.5	13.2	N	PC	5	0	10
7	78	53	66	0.00	0.0	0		SE	2.5	10.5	SE	PC	0	1	16
8	86	56	71	0.00	0.0	0		S	2.5	16.3	SW	CLR	0	6	21
9	90	61	76	T	0.0	0	RW-	S	3.9	17.5	S	PC	0	11	24
10	87	68	78	0.05	0.0	0	TRW,RW-	S	6.5	20.6	SW	CLDY	0	13	27
11	80	66	73	1.41	0.0	0	TRW+	S	5.2	19.3	SW	CLDY	0	8	23
12	83	66	75	0.00	0.0	0		W	2.9	13.4	W	CLDY	0	10	25
13	75	59	67	0.30	0.0	0	TRW	N	3.9	14.9	NE	CLDY	0	2	17
14	70	57	64	0.21	0.0	0	TRW	W	6.8	21.1	N	PC	1	0	14
15	80	54	67	0.01	0.0	0	TRW	W	6.8	22.8	W	PC	0	2	17
16	77	58	68	0.00	0.0	0		N	3.9	15.0	NW	CLR	0	3	18
17	81	56	69	0.00	0.0	0		W	3.4	12.4	W	CLR	0	4	19
18	83	58	71	0.00	0.0	0		S	3.4	16.0	S	CLR	0	6	21
19	88	62	75	0.00	0.0	0		SE	3.5	12.4	S	PC	0	10	24
20	92	68	80	0.00	0.0	0	H	SW	3.4	12.4	S	PC	0	15	27
21	92	67	80	0.00	0.0	0	H	SW	2.6	11.1	SW	CLR	0	15	27
22	93	68	81	0.00	0.0	0	H	S	1.9	8.3	SE	PC	0	16	27
23	91	66	79	0.00	0.0	0		S	2.2	9.4	SW	CLR	0	14	26
24	92	68	80	0.05	0.0	0	TRW,H	SW	2.3	20.5	SW	CLDY	0	15	27
25	89	71	80	0.01	0.0	0	TRW,RW-	S	2.6	15.3	SE	PC	0	15	29
26	89	70	80	0.00	0.0	0		SW	5.6	15.6	SW	PC	0	15	28
27	87	69	78	0.00	0.0	0		N	4.2	15.6	N	PC	0	13	28
28	85	63	74	0.00	0.0	0		NE	1.5	9.3	NE	PC	0	9	24
29	88	64	76	0.00	0.0	0		S	2.5	11.2	SE	PC	0	11	25
30	91	71	81	0.00	0.0	0		SW	4.0	13.5	W	CLR	0	16	29
<b>AVG/TOT</b>	<b>84.6</b>	<b>63.2</b>	<b>73.9</b>	<b>2.78</b>	<b>0.0</b>			<b>SW</b>	<b>3.9</b>				<b>7</b>	<b>281</b>	<b>692</b>
<b>DEP.</b>	<b>+2.0</b>	<b>+2.3</b>	<b>+2.1</b>	<b>-1.43</b>	<b>0.0</b>			<b>SW</b>	<b>-1.6</b>				<b>-12</b>	<b>+63</b>	<b>+58</b>

NUMBER OF DAYS and DEPARTURE

	MAX TEMP				MIN TEMP				PRECIPITATION					SNOW	SKY COVER		
	>=90	<=32	<=32	<=0	>	>=.01	>=.10	>=.50	>=1.00	>=1.0	CLR	PC	CLDY				
TOTAL	9	0	0	0	11	10	5	1	1	0	7	16	7				
DEP	+3	0	0	0	0	-1	-2	0	0	0	-3	+4	-1				

	WEATHER TYPES											SEASONAL DEGREE DAYS			PRECIPITATION
	R	L	S	Z	IP	A	T	F	D	H	BS	HEATING	COOLING	CORN	JAN-June
TOTAL	11	0	0	0	0	1	10	0	0	5	0	5213	360	1382	22.14
DFF	0	-3	0	0	+4	-2						-612	+64	+13	+2.37

Averages based on 1971-2000 data. The daily sky condition is determined by the prevailing sky condition of three observations made between 7am and 7pm LST. Snow depth at 7am LST. All other data midnight-midnight. M = Missin

WEATHER TYPES:

R = Rain  
L = Drizzle  
S = Snow  
T = Thunder  
Z = Freezing rain/drizzle  
IP = Ice pellets (sleet)  
A = Hail  
F = Fog  
D = Dust  
H = Haze  
BS = Blowing snow  
RW = Rainshower  
SW = Snowshower

PRECIP INTENSITY

- Light  
Moderate  
+ Heavy  
Precip amount "T" = Trace

DEGREE DAYS Heat and Cool base 65F. Corn Growing base 50F, ceiling 86F. Heating DD season July-June. Cool and Corn DD season January-December.

# Champaign-Urbana Weather Highlights – June 2002

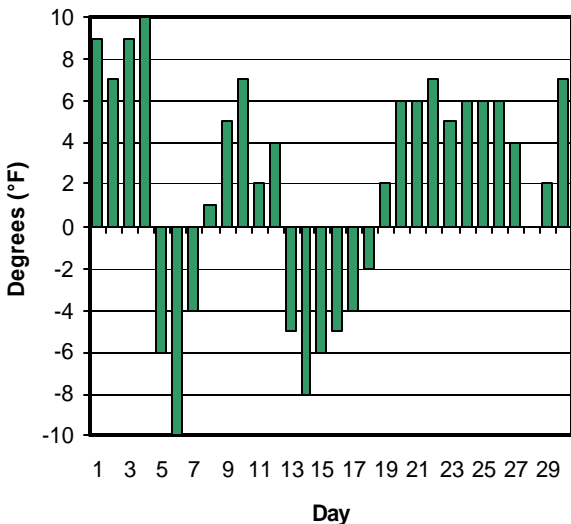
## ILLINOIS STATE WATER SURVEY

Maria Peters, Weather Observer  
2204 Griffith Drive  
Champaign, IL 61820  
wxobsrvr@sws.uiuc.edu

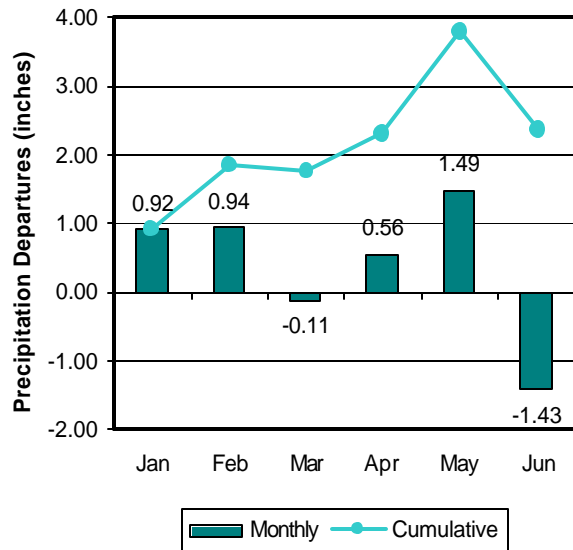
The beginning of June 2002 continued the wet conditions from May, with 2.72 inches of precipitation falling during the first half of the month. If this had continued, June 2002 would have ended well above average. However, from the 16<sup>th</sup> onward, only 0.06 inches of further precipitation fell and Champaign-Urbana ended the month with only 2.78 inches total. This ranks June 2002 as the 39<sup>th</sup> driest June on record. The driest June occurred in 1988 when only 0.32 inches of precipitation fell during the entire month, all of which fell on the same day (June 8<sup>th</sup>).

Although no temperature records were set during June 2002, the month ended with the maximum, minimum and mean temperatures all approximately two degrees above average. This tied June 2002 as the 15<sup>th</sup> warmest June since 1889.

June 2002 Mean Daily Temperature Departure from Normal



2002 Monthly Precipitation Departures from Normal



MCP

The daily climate statistics are available by touch-tone phone. Call 333-8890 and select menu option 1. The recording is updated daily Monday through Friday by 8:00 a.m. For this and other climate data, visit the State Climatologist web site at <http://www.sws.uiuc.edu/atmos/statecli/>