



NATURALLY ILLINOIS EXPO

INSTITUTE OF NATURAL RESOURCE SUSTAINABILITY

Home of the State Scientific Surveys at the University of Illinois

Illinois Natural History Survey | Illinois State Archaeological Survey | Illinois State Geological Survey | Illinois State Water Survey | Illinois Sustainable Technology Center

Experience fifty exhibits, demonstrations, and hands-on activities of interest to the public, teachers, and students of all levels. Interact with scientists who work on cutting-edge research and solutions to water, energy, ecosystem, mineral resource, natural hazard, climate, cultural resources, and technology issues.

New exhibits for 2010 include:

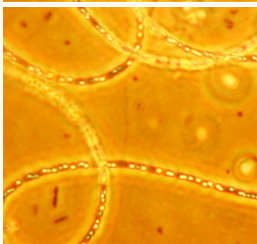
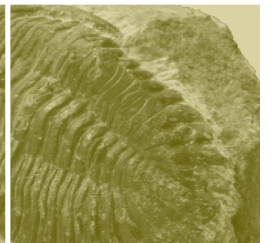
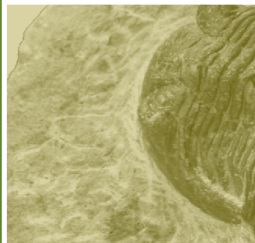
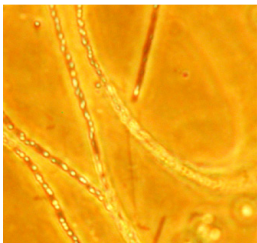
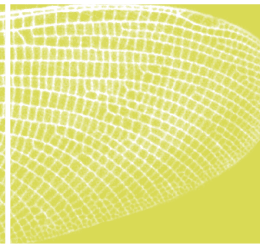
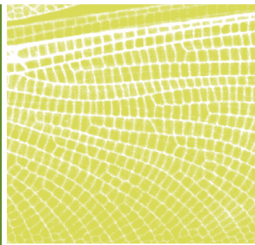
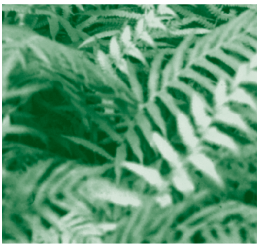
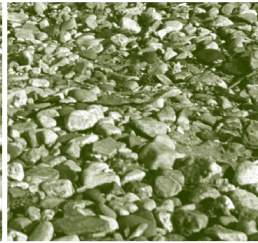
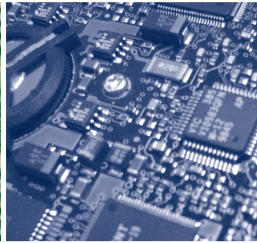
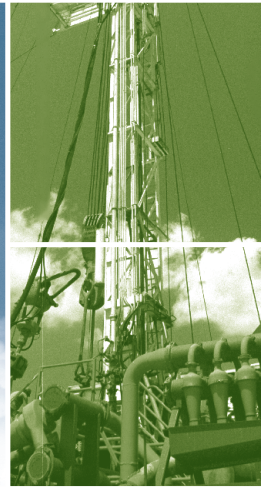
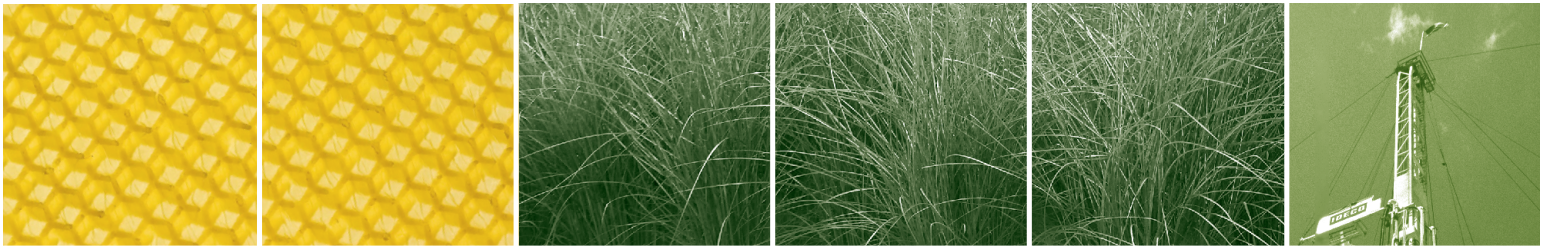
Turtles of Illinois • Rocks, Bones, Pots, and People • Waste to Biodiesel • Steamy Swamps and Ice Age Glaciers • Off the Grid • Backyard Diversity—Insects of Illinois and Beyond • Climate Change in Illinois • Kids Fossils Dig

The second annual Naturally Illinois Expo is an exciting opportunity to learn about science and the natural resources of Illinois through the work of the INRS State Scientific Surveys. Our scientists work to support sustainable economic development and natural and cultural resource management in Illinois and beyond. Come see how we can work together to improve life in Illinois today and into the future.

Groups, please contact Eric Plankell in advance at 217-265-8029 or expo@inrs.illinois.edu.



Earth, Wind, & Fire 5K Run and 2.5K Walk starts Saturday at 9:00 AM
www.inrs.illinois.edu/expo/5krun.shtml or 217-244-2179



March 12-13, 2010

Friday 9:00-3:00, Saturday 10:00-3:00

Natural Resources Building, 615 East Peabody Drive, Champaign, Illinois

www.inrs.illinois.edu/expo

Diamond Sponsor: Raimonde Drilling Corporation; Gold Sponsors: I Hotel & Convention Center, Schlumberger Carbon Services; Silver Sponsors: East Central Illinois Section of the American Chemical Society, Illinois Coal Association, Illinois Mine Subsidence Insurance Fund, Shaw Environmental and Infrastructure Group

