

# Dams and Locks

## Legend



Dams and Locks



Municipalities

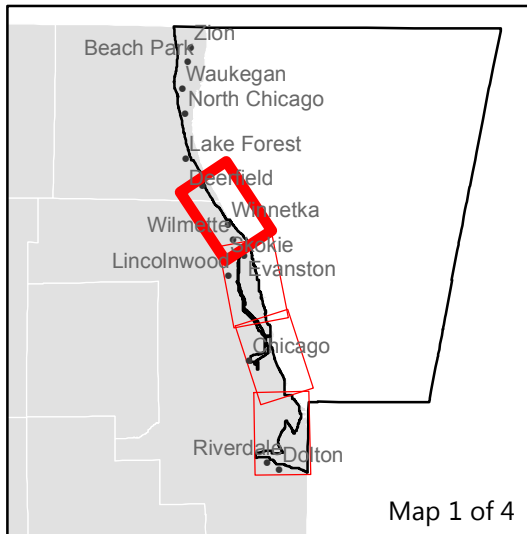


Coastal Zone Boundary

For the purposes of coastal zone management, dams are restricted to constructed impoundments that are either (1) 25 feet or more in height and greater than 15 acre-feet in capacity, or, (2) 6 feet or more in height and greater than 50 acre-feet in capacity (EPA 2001).

The CRCW, the O'Brien Lock and Dam, Wilmette Pumping Station and the North Branch Dam do not have sufficient height nor constructed impoundments of sufficient size and are therefore excluded in accordance with the definitions of dams in EPA (2001).

Sources: USACE National Inventory of Dams 2013



# Dams and Locks

## Legend



Dams and Locks



Municipalities

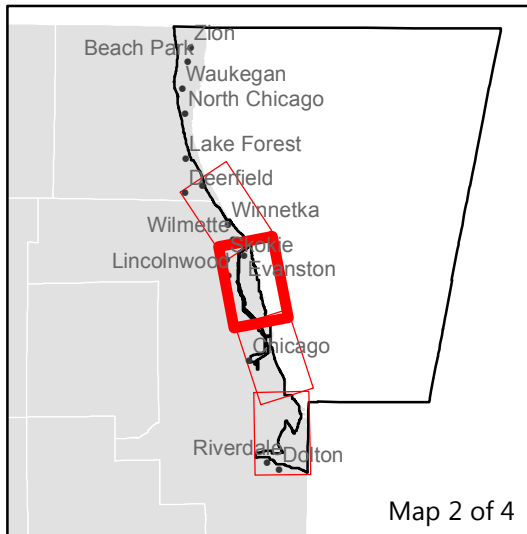


Coastal Zone Boundary

For the purposes of coastal zone management, dams are restricted to constructed impoundments that are either (1) 25 feet or more in height and greater than 15 acre-feet in capacity, or, (2) 6 feet or more in height and greater than 50 acre-feet in capacity (EPA 2001).

The CRCW, the O'Brien Lock and Dam, Wilmette Pumping Station and the North Branch Dam do not have sufficient height nor constructed impoundments of sufficient size and are therefore excluded in accordance with the definitions of dams in EPA (2001).

Sources: USACE National Inventory of Dams 2013



# Dams and Locks

## Legend



Dams and Locks



Municipalities

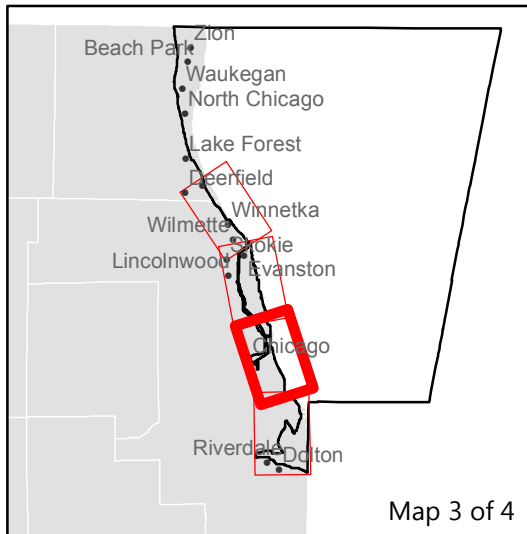


Coastal Zone Boundary

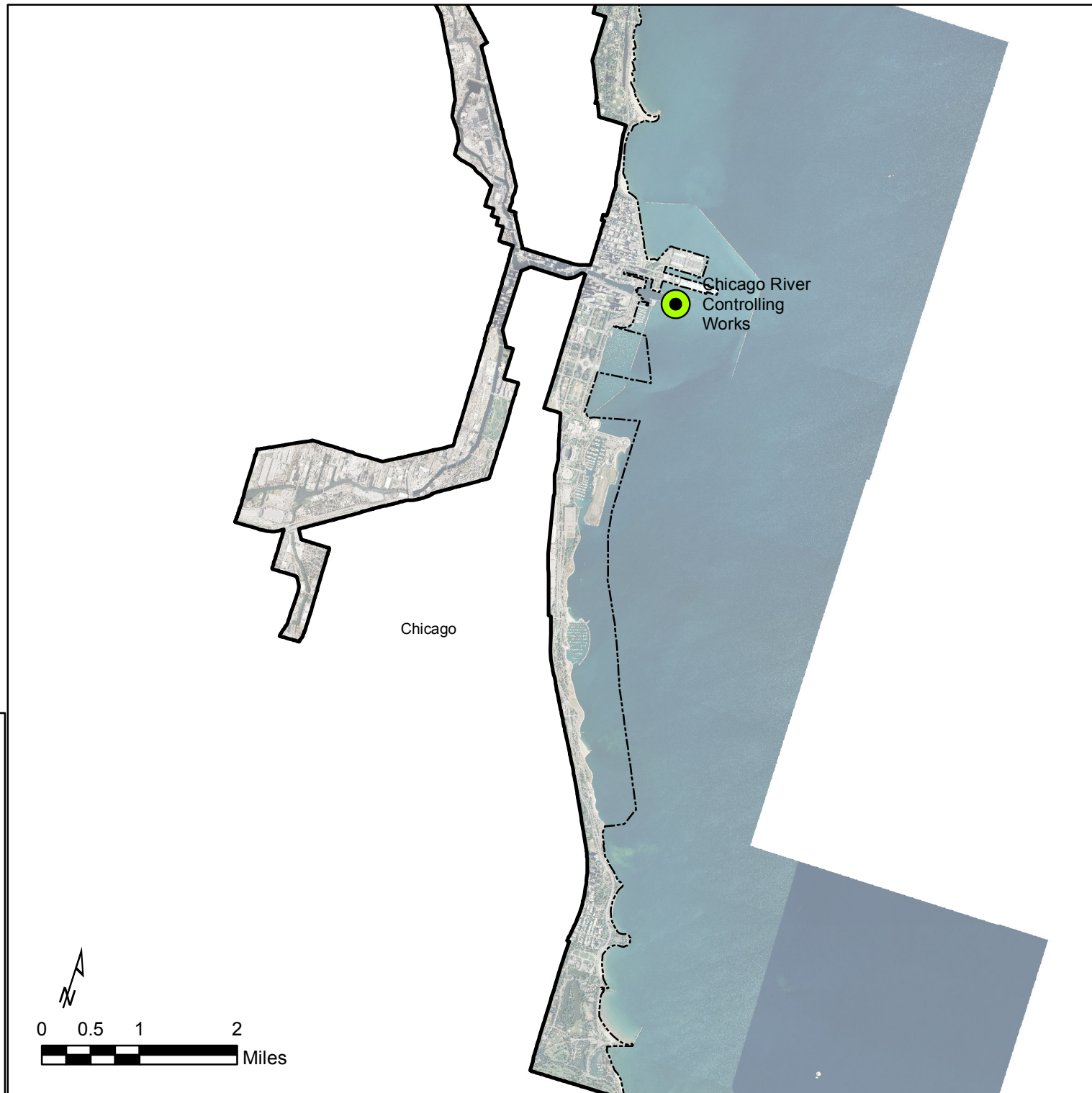
For the purposes of coastal zone management, dams are restricted to constructed impoundments that are either (1) 25 feet or more in height and greater than 15 acre-feet in capacity, or, (2) 6 feet or more in height and greater than 50 acre-feet in capacity (EPA 2001).

The CRCW, the O'Brien Lock and Dam, Wilmette Pumping Station and the North Branch Dam do not have sufficient height nor constructed impoundments of sufficient size and are therefore excluded in accordance with the definitions of dams in EPA (2001).

Sources: USACE National Inventory of Dams 2013



Map 3 of 4





# Dams and Locks

## Legend



Dams and Locks



Municipalities

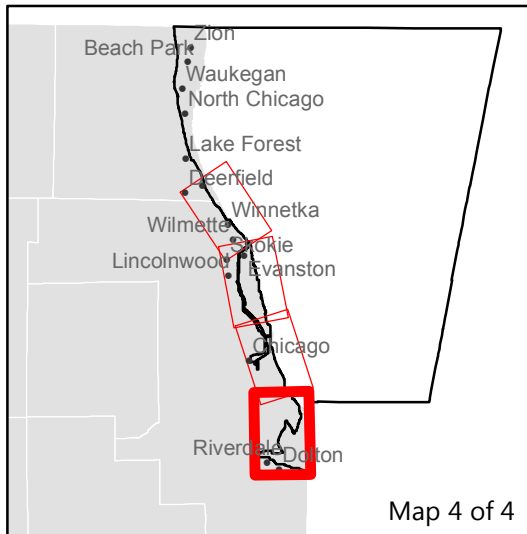


Coastal Zone Boundary

For the purposes of coastal zone management, dams are restricted to constructed impoundments that are either (1) 25 feet or more in height and greater than 15 acre-feet in capacity, or, (2) 6 feet or more in height and greater than 50 acre-feet in capacity (EPA 2001).

The CRCW, the O'Brien Lock and Dam, Wilmette Pumping Station and the North Branch Dam do not have sufficient height nor constructed impoundments of sufficient size and are therefore excluded in accordance with the definitions of dams in EPA (2001).

Sources: USACE National Inventory of Dams 2013



Map 4 of 4

