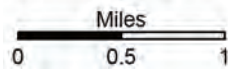
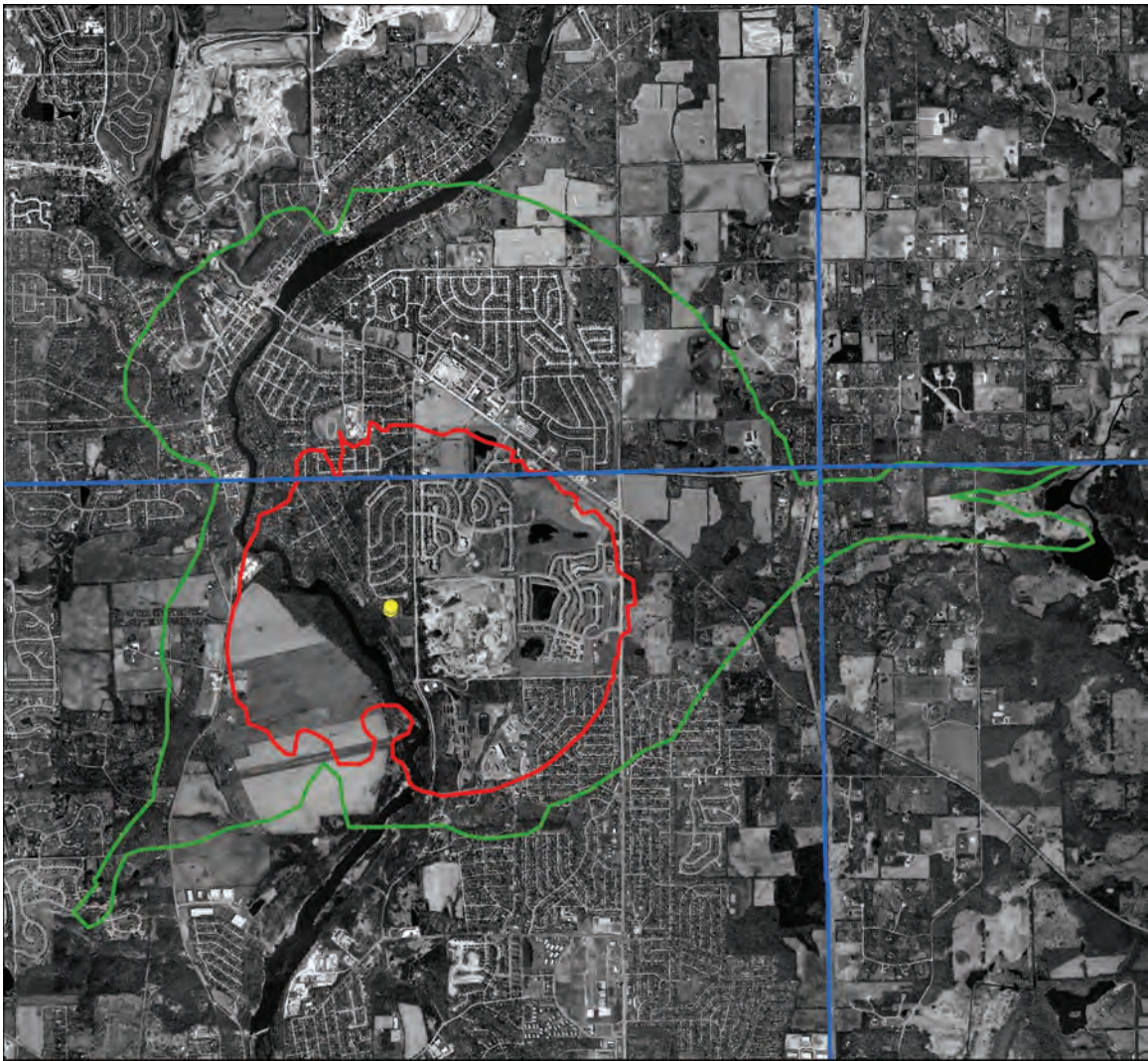


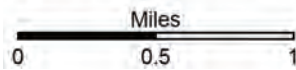
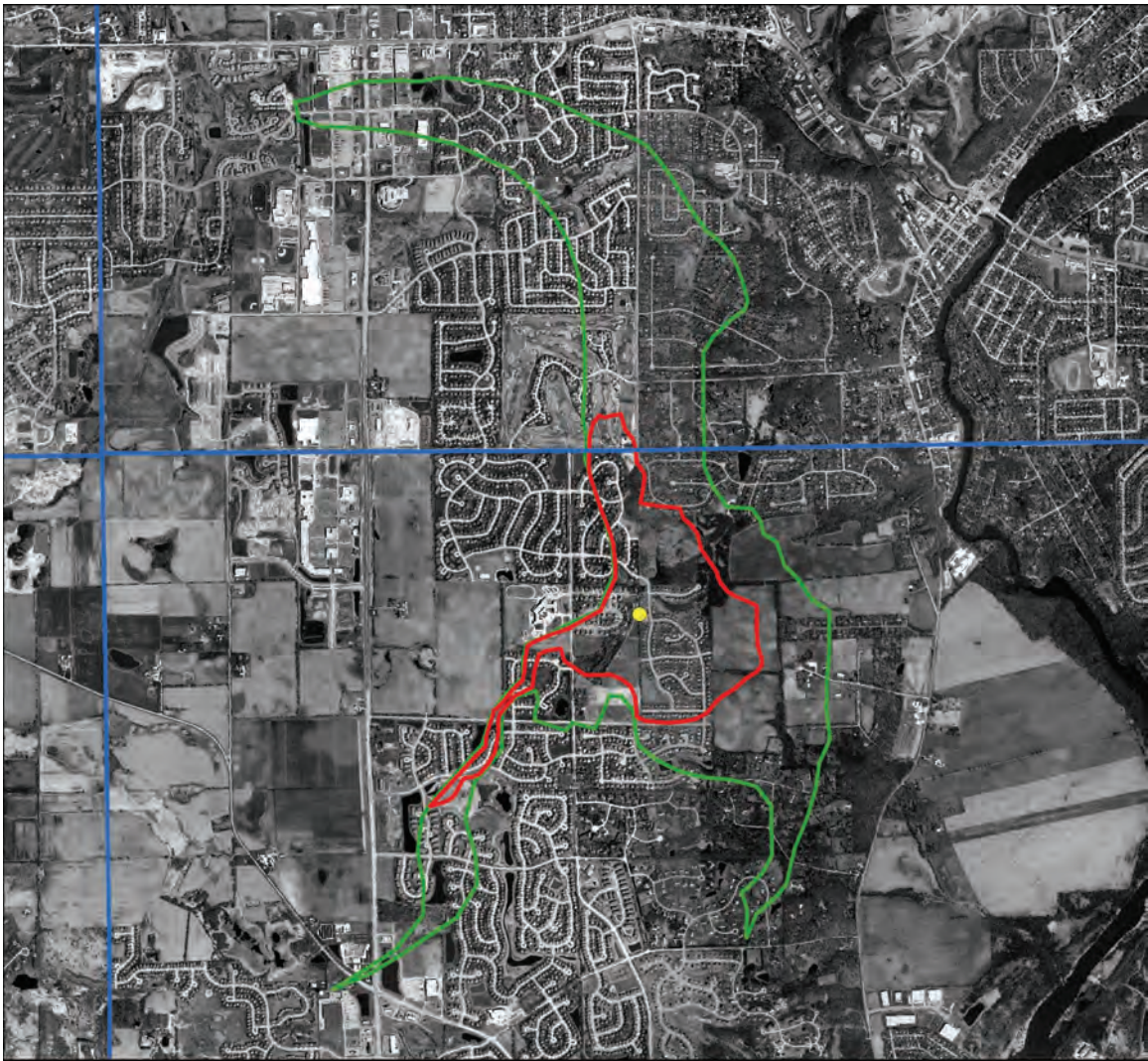
Appendix H. Capture Zone Delineations

Included are capture zone delineations for high-capacity public water supply wells open to the shallow aquifers in Kane County. High-capacity wells are defined in this report as wells that pumped more than 100,000 gallons per day in 2003.



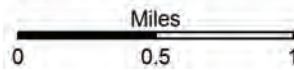
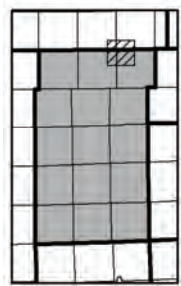
- Well locations
- Five-year capture zone
- Twenty-year capture zone
- Township boundary

Figure H-1. Five- and twenty-year capture zones of Algonquin wells 7 and 11 superimposed on 2005 aerial photography.



- Well location
- Five-year capture zone
- Twenty-year capture zone
- Township boundary

Figure H-2. Five- and twenty-year capture zones of Algonquin well 8 superimposed on 2005 aerial photography.







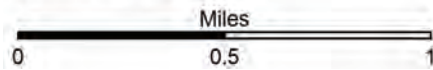
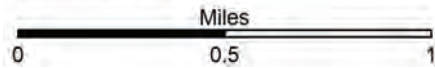
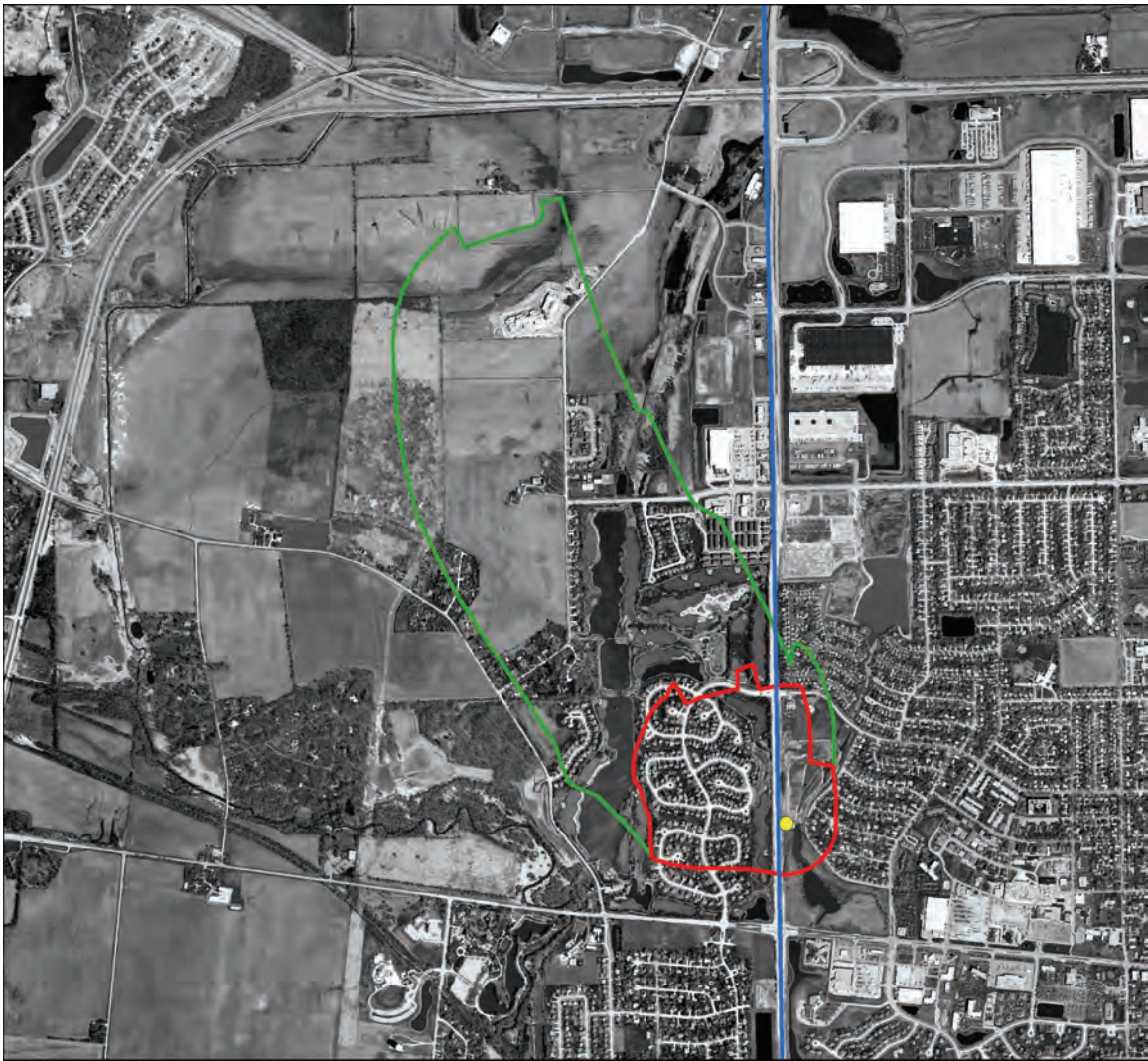
-  Well location
-  Five-year capture zone
-  Twenty-year capture zone
-  Township boundary

Figure H-3. Five- and twenty-year capture zones of Algonquin well 9 superimposed on 2005 aerial photography.



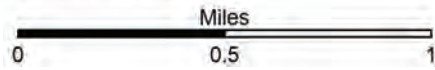
- Well location
- Five-year capture zone
- Twenty-year capture zone
- Township boundary

Figure H-4. Five- and twenty-year capture zones of Aurora well 101 superimposed on 2005 aerial photography.



- Well location
- Five-year capture zone
- Twenty-year capture zone
- Township boundary

Figure H-5. Five- and twenty-year capture zones of Aurora well 103 superimposed on 2005 aerial photography.







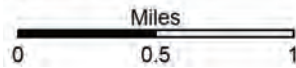
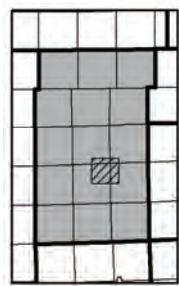
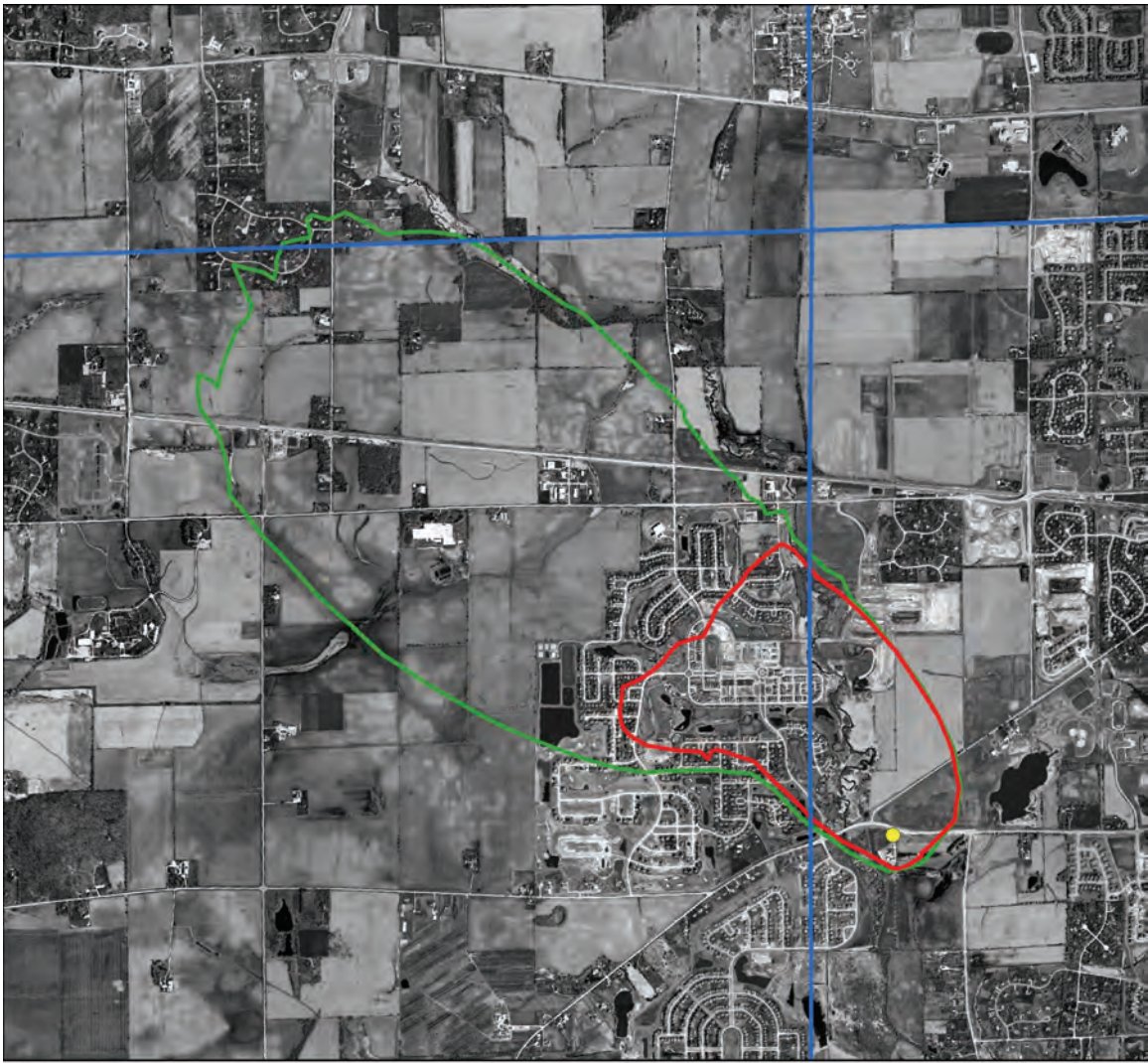
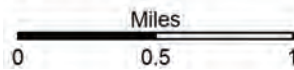
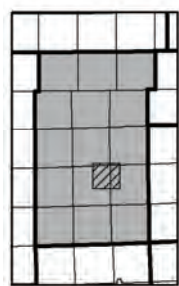
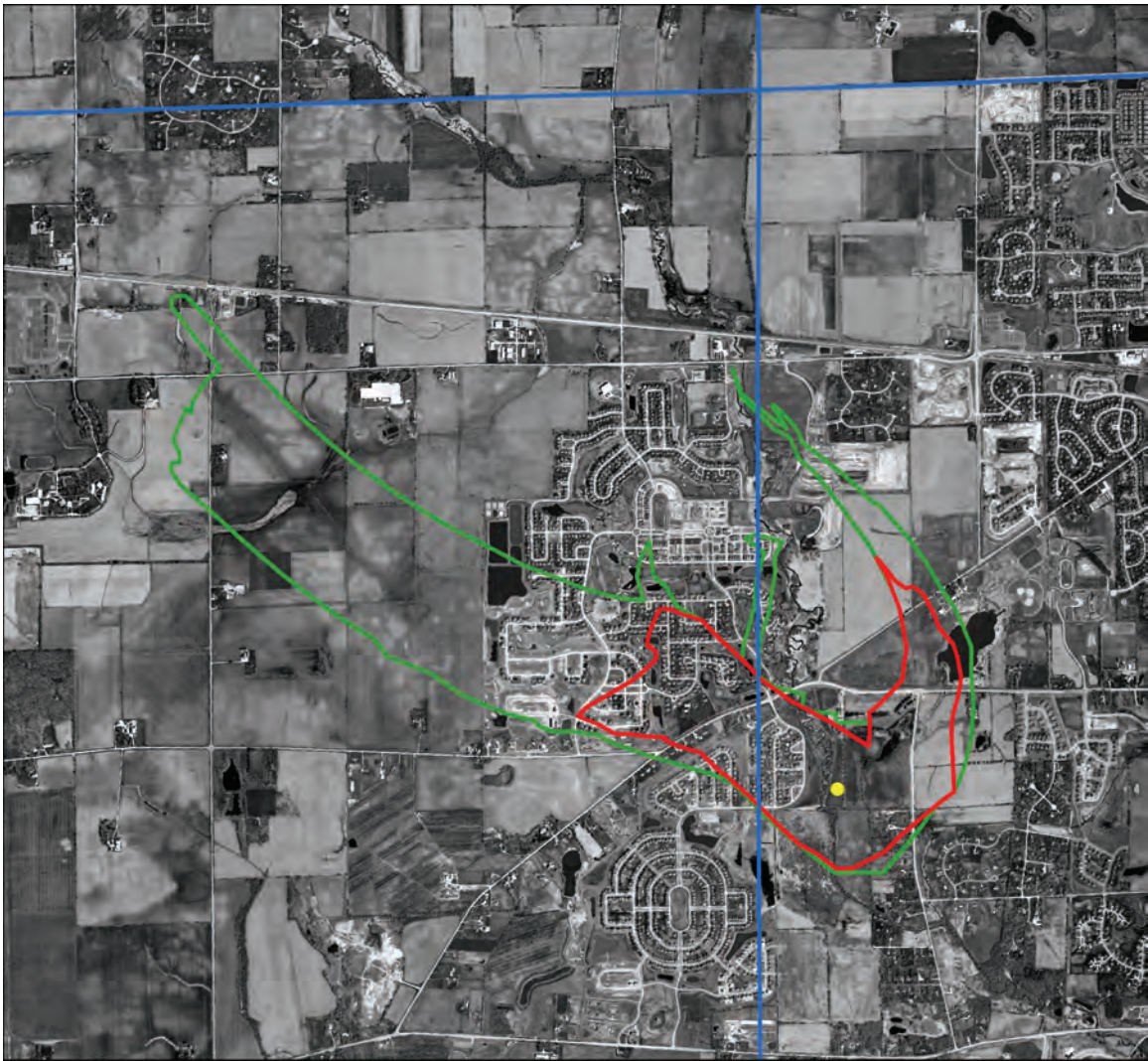
-  Well location
-  Five-year capture zone
-  Twenty-year capture zone
-  Township boundary

Figure H-6. Five- and twenty-year capture zones of Aurora Country Club well 6 superimposed on 2005 aerial photography.



- Well location
- Five-year capture zone
- Twenty-year capture zone
- Township boundary

Figure H-7. Five- and twenty-year capture zones of Batavia well 6 superimposed on 2005 aerial photography.







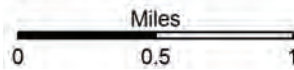
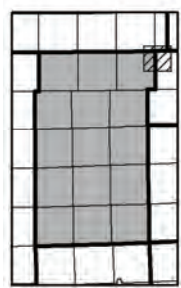
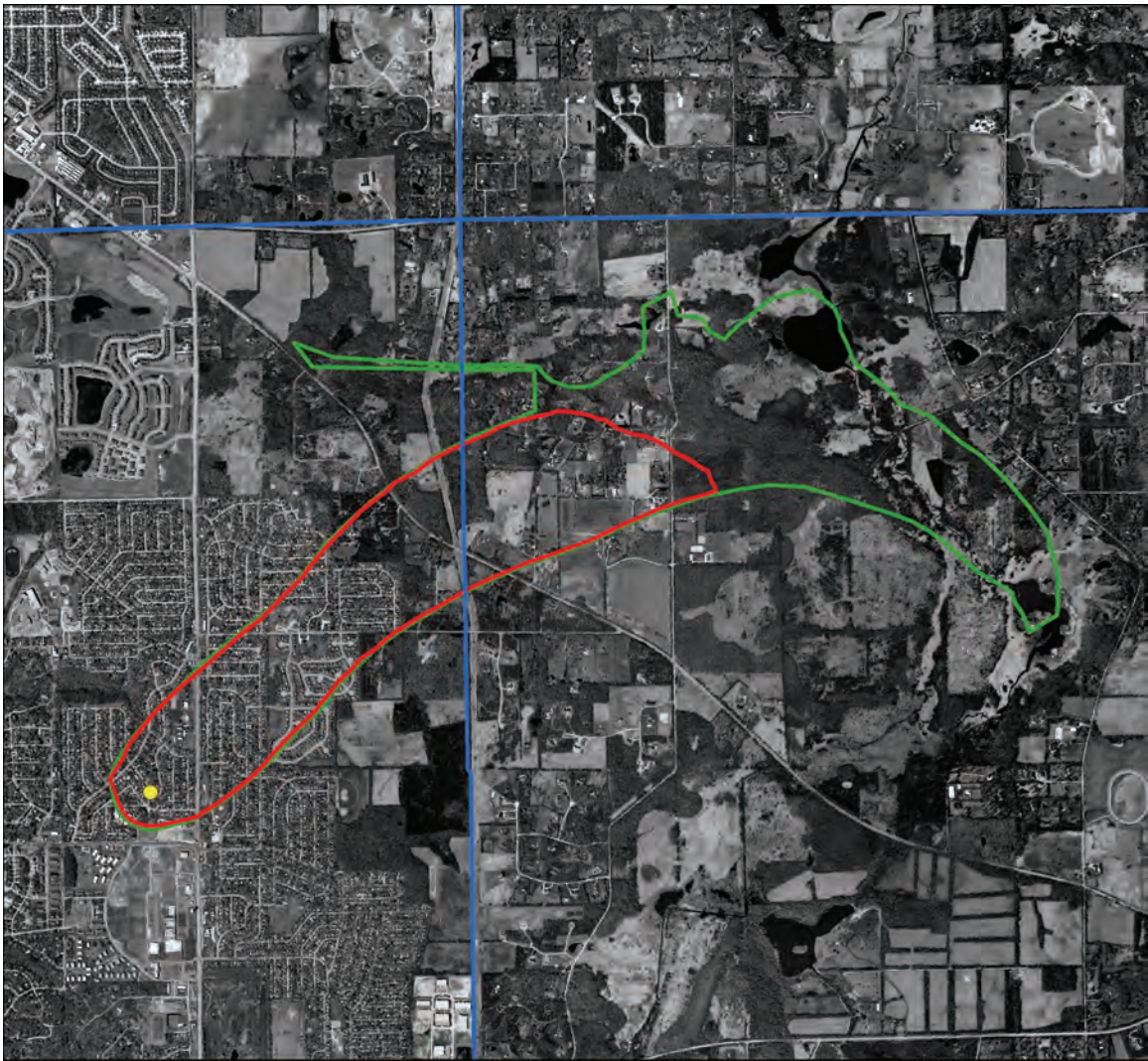
-  Well location
-  Five-year capture zone
-  Twenty-year capture zone
-  Township boundary

Figure H-8. Five- and twenty-year capture zones of Batavia well 7 superimposed on 2005 aerial photography.



Figure H-9. Five- and twenty-year capture zones of Batavia well 8 superimposed on 2005 aerial photography.







-  Well location
-  Five-year capture zone
-  Twenty-year capture zone
-  Township boundary

Figure H-10. Five- and twenty-year capture zones of Carpentersville well 5 superimposed on 2005 aerial photography.

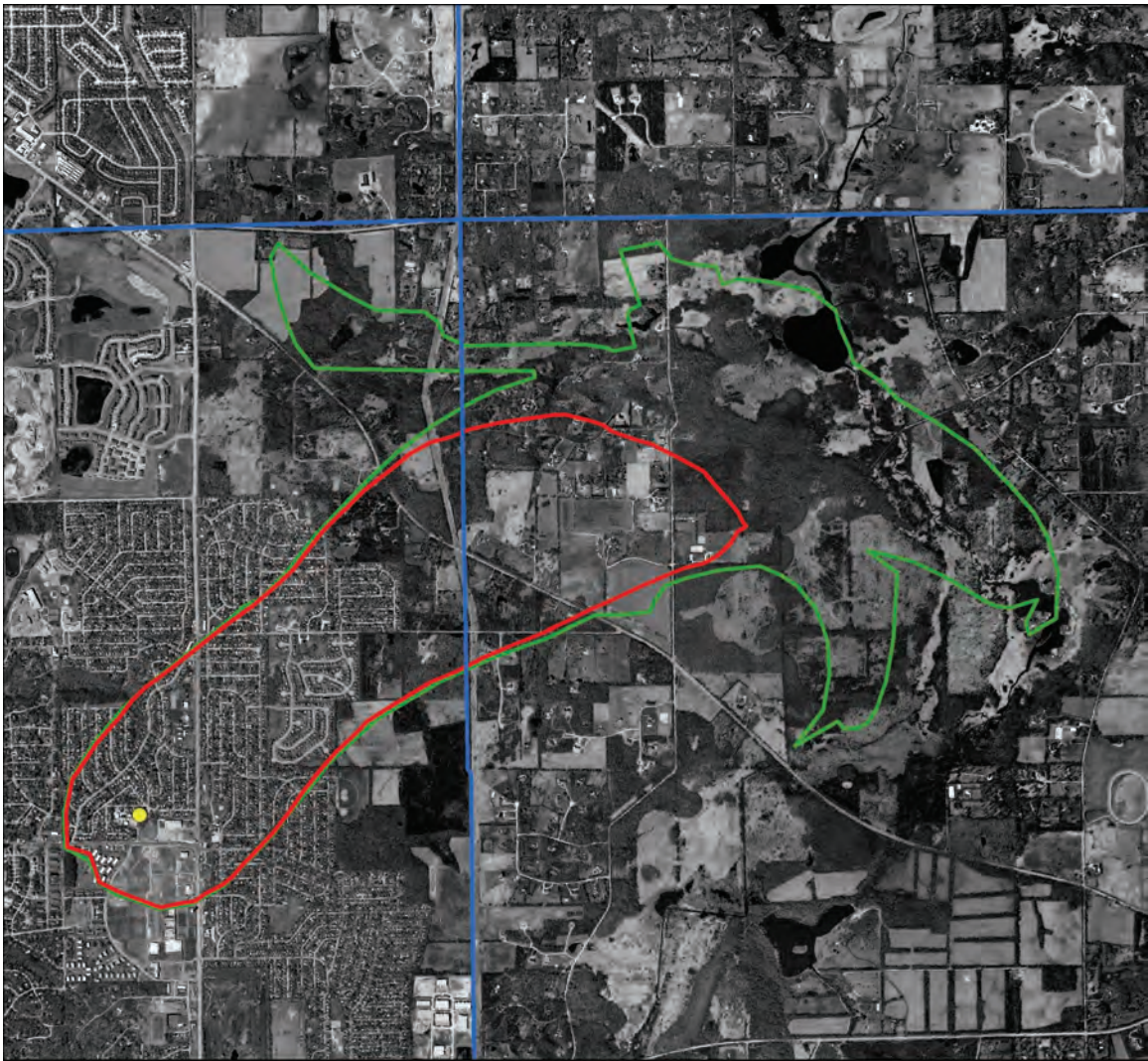
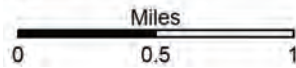


Figure H-11. Five- and twenty-year capture zones of Carpentersville well 6 superimposed on 2005 aerial photography.







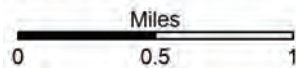
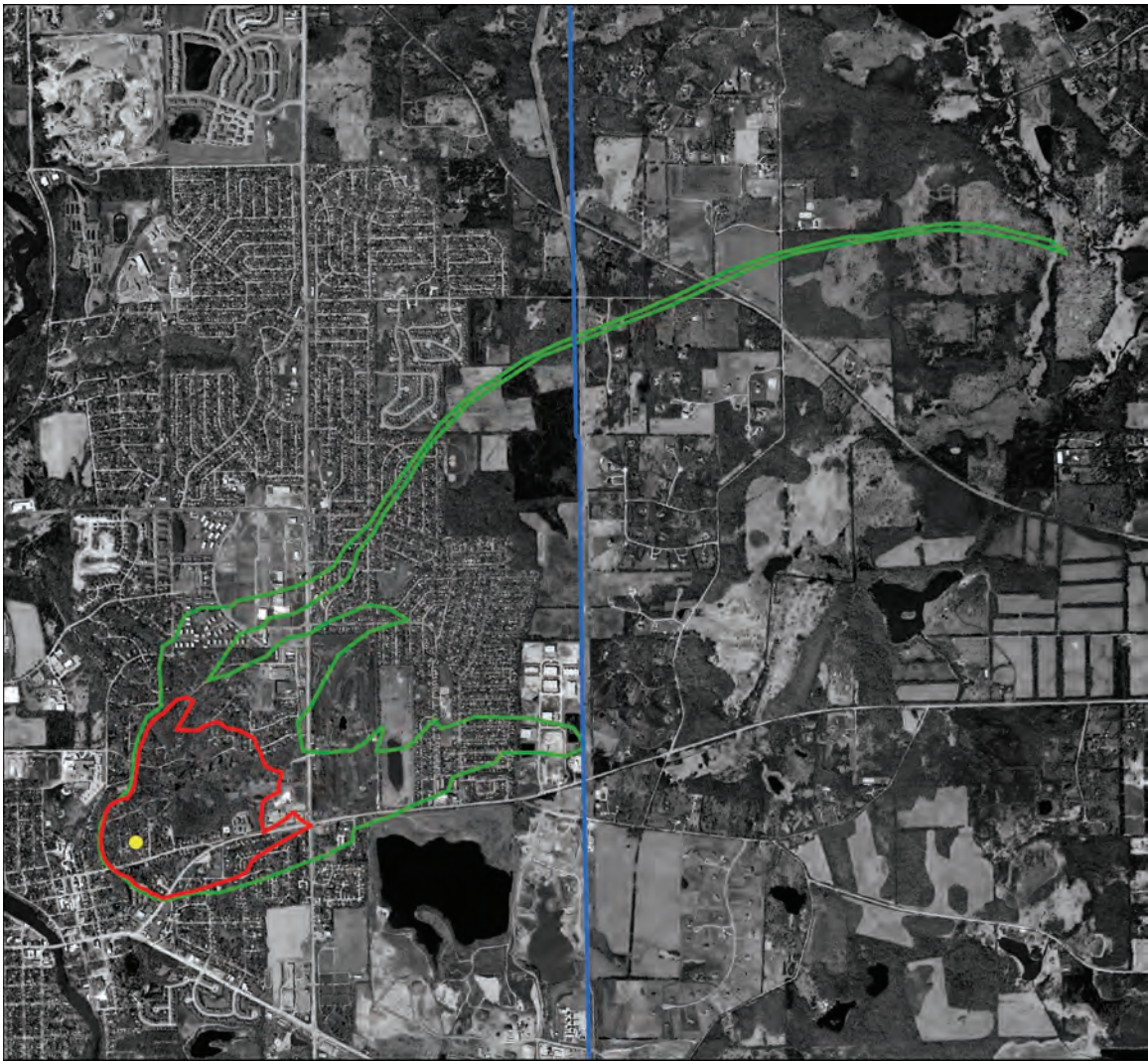
-  Well location
-  Five-year capture zone
-  Twenty-year capture zone
-  Township boundary

Figure H-12. Five- and twenty-year capture zones of Carpentersville well 7 superimposed on 2005 aerial photography.







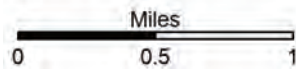
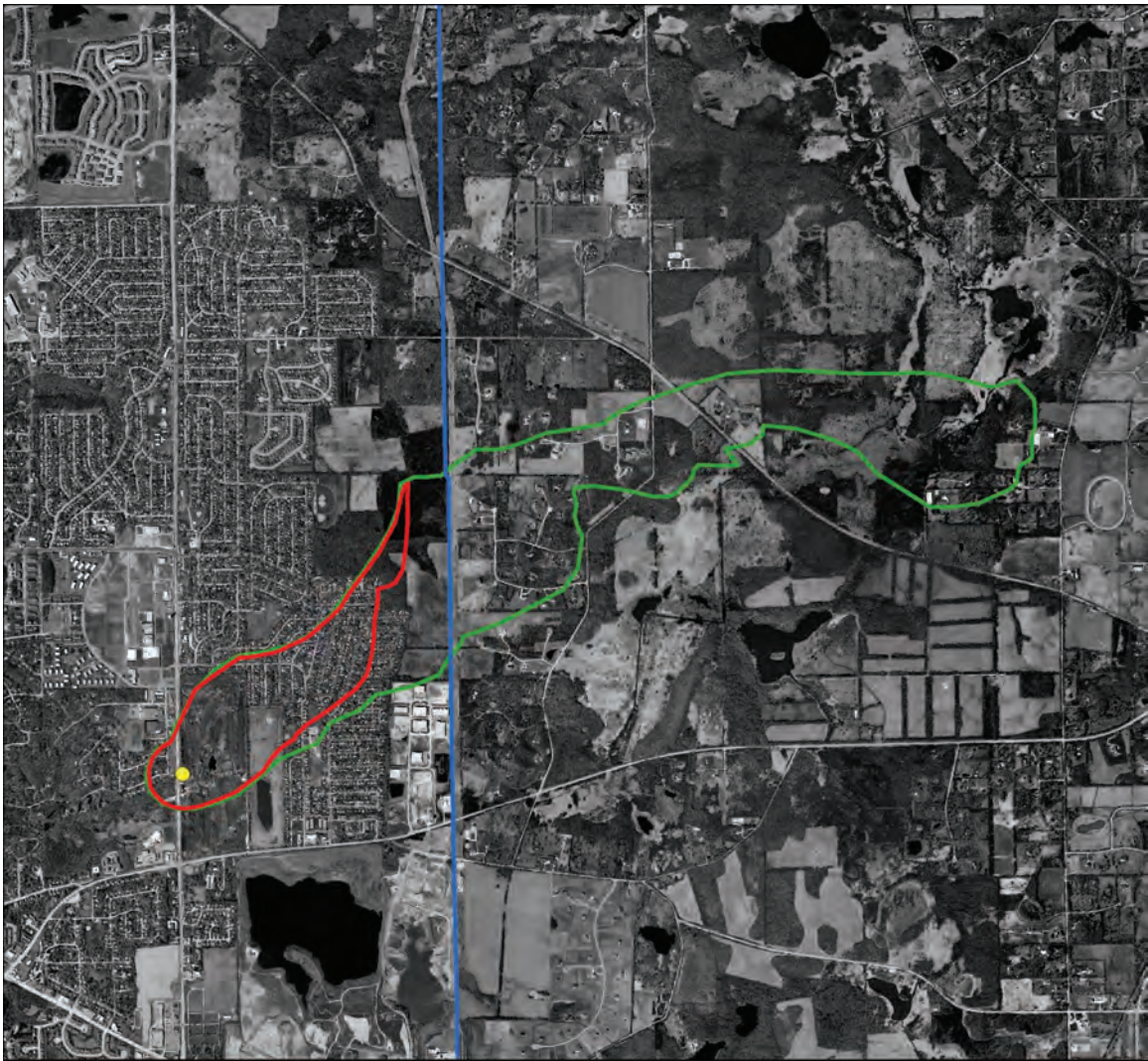
-  Well location
-  Five-year capture zone
-  Twenty-year capture zone
-  Township boundary

Figure H-13. Five- and twenty-year capture zones of East Dundee well 3 superimposed on 2005 aerial photography.







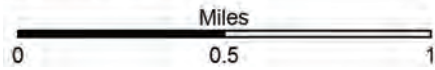
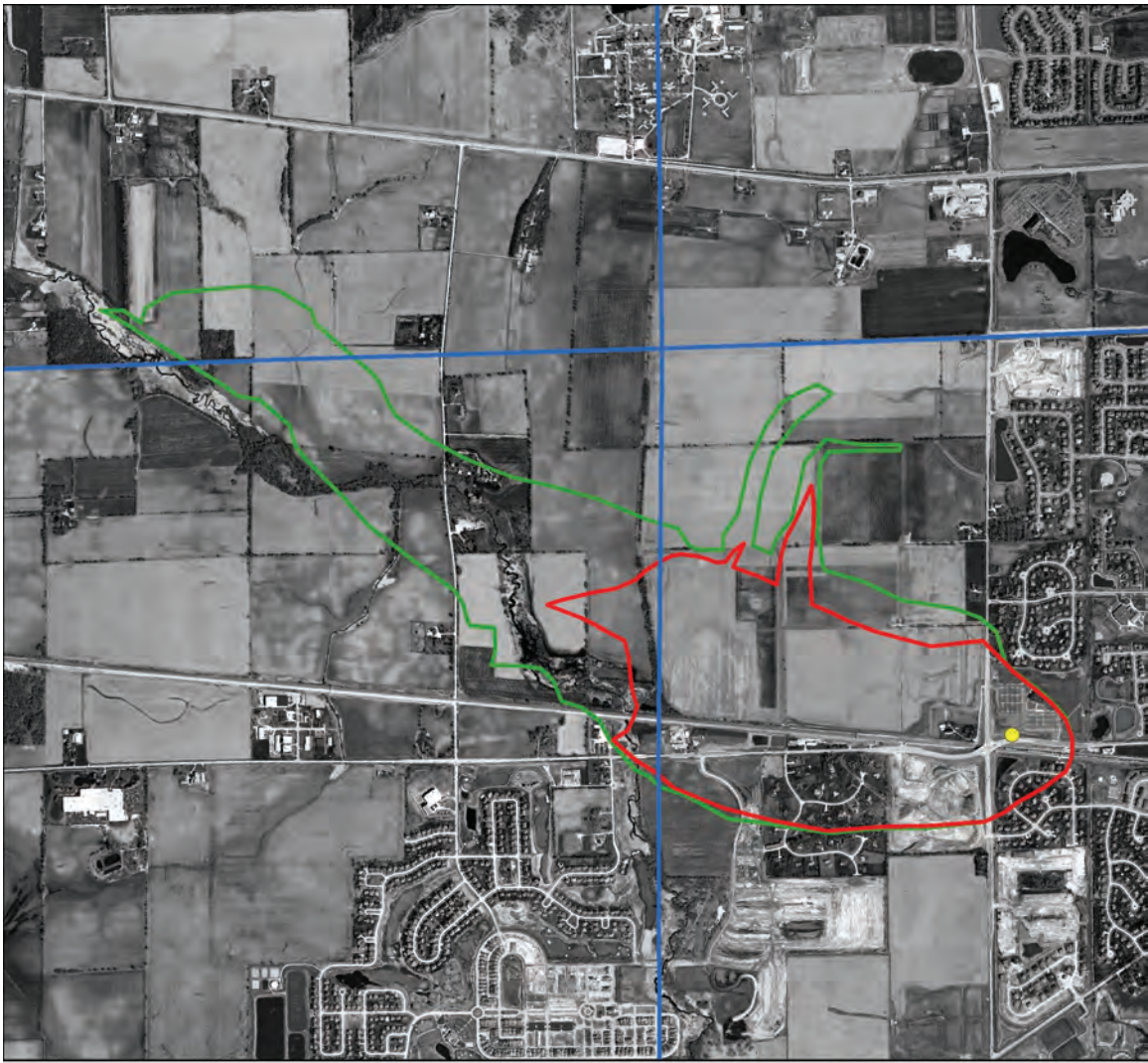
-  Well location
-  Five-year capture zone
-  Twenty-year capture zone
-  Township boundary

Figure H-14. Five- and twenty-year capture zones of East Dundee well 4 superimposed on 2005 aerial photography.







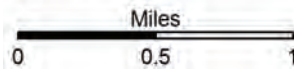
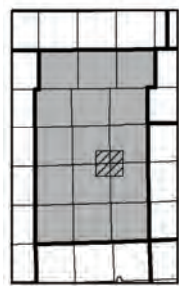
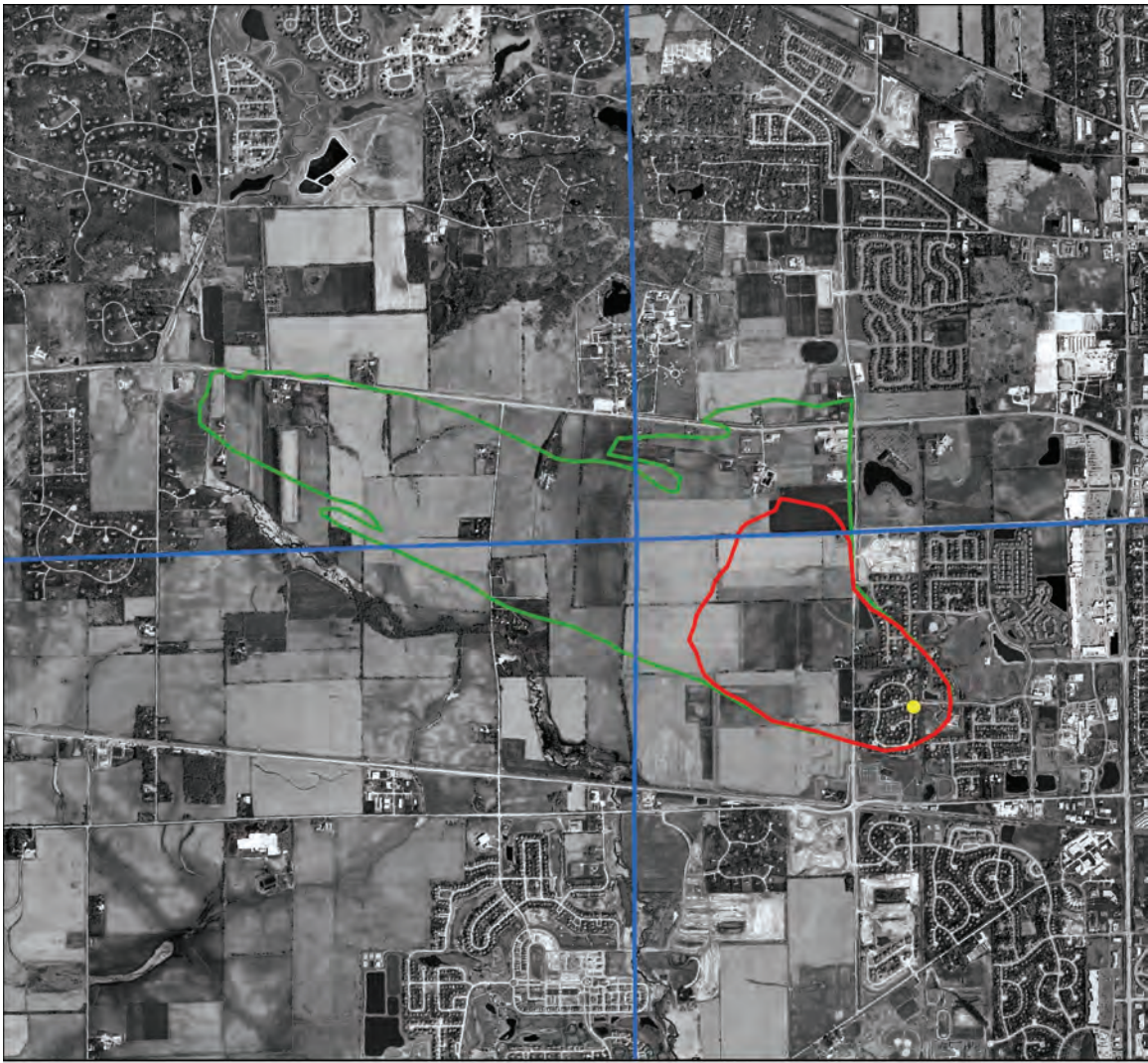
-  Well location
-  Five-year capture zone
-  Twenty-year capture zone
-  Township boundary

Figure H-15. Five- and twenty-year capture zones of Geneva well 8 superimposed on 2005 aerial photography.



Figure H-16. Five- and twenty-year capture zones of Geneva well 9 superimposed on 2005 aerial photography.







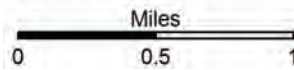
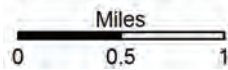
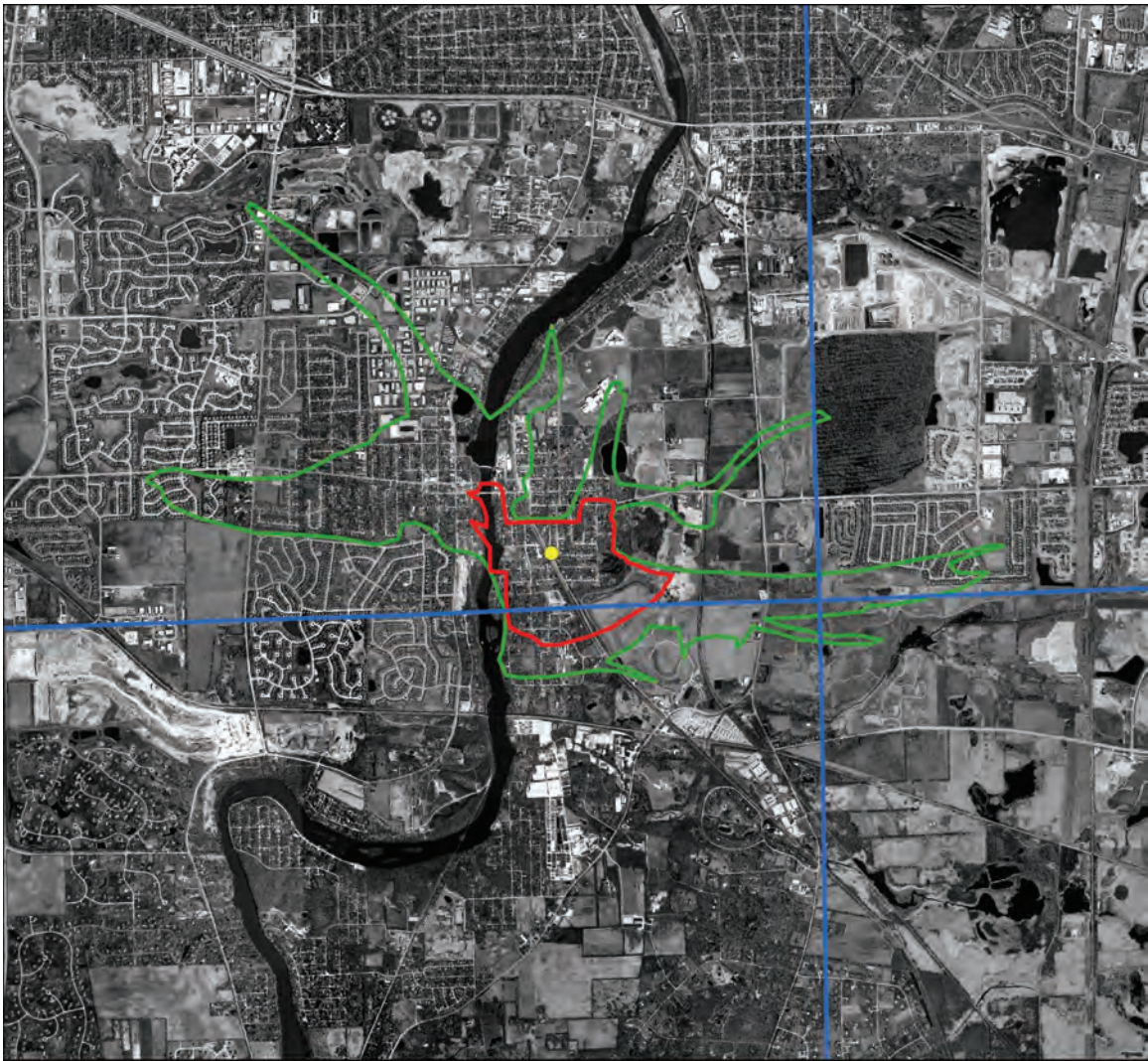
-  Well location
-  Five-year capture zone
-  Twenty-year capture zone
-  Township boundary

Figure H-17. Five- and twenty-year capture zones of Geneva well 10 superimposed on 2005 aerial photography.



- Well location
- Five-year capture zone
- Twenty-year capture zone
- Township boundary

Figure H-18. Five- and twenty-year capture zones of Montgomery well 13 superimposed on 2005 aerial photography.







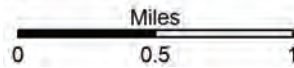
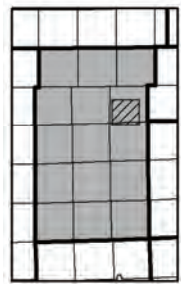
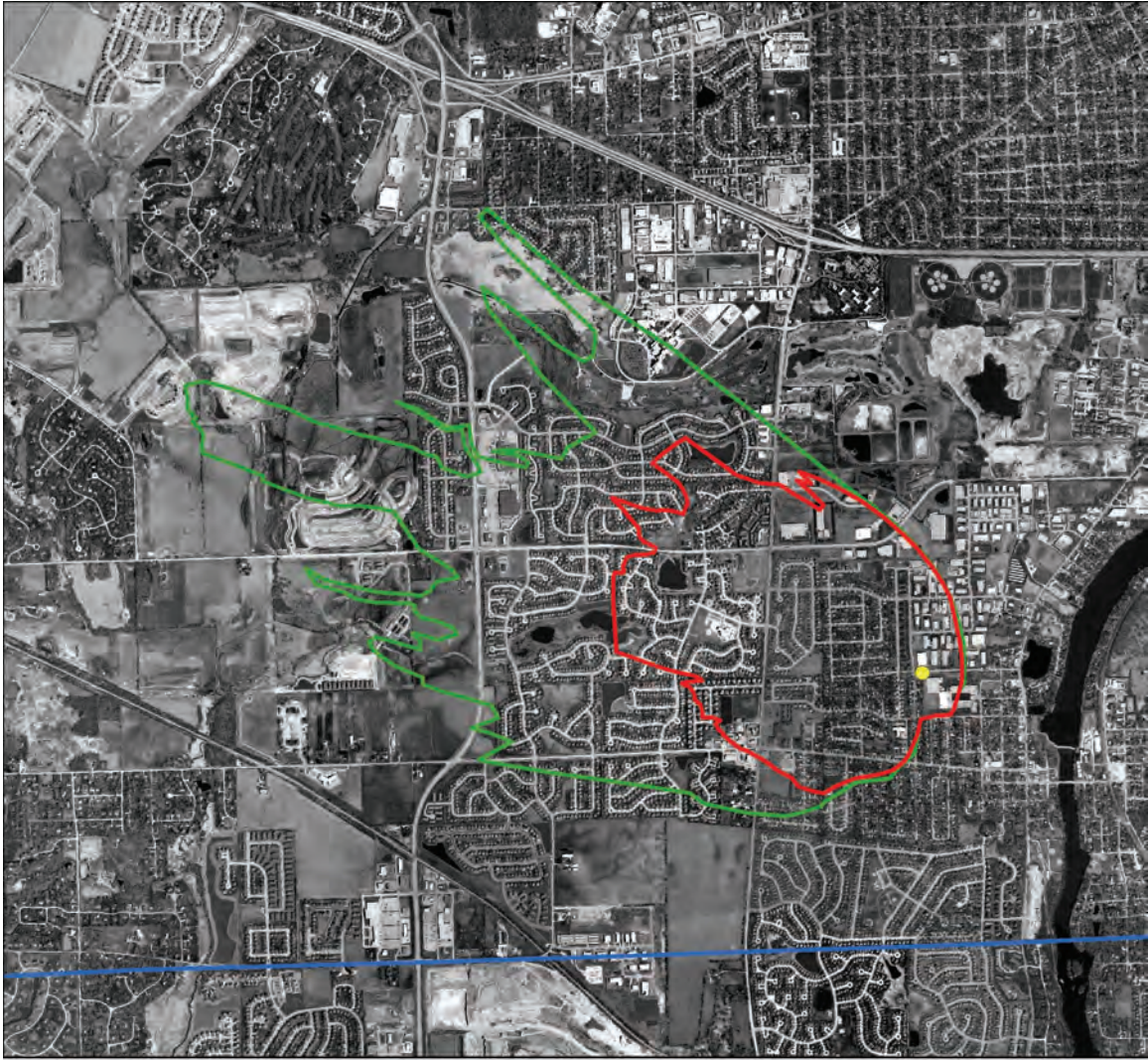
-  Well location
-  Five-year capture zone
-  Twenty-year capture zone
-  Township boundary

Figure H-19. Five- and twenty-year capture zones of South Elgin well 3 superimposed on 2005 aerial photography.

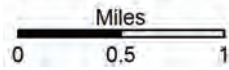
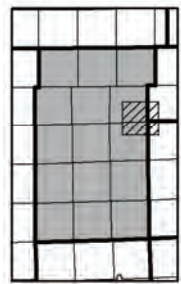
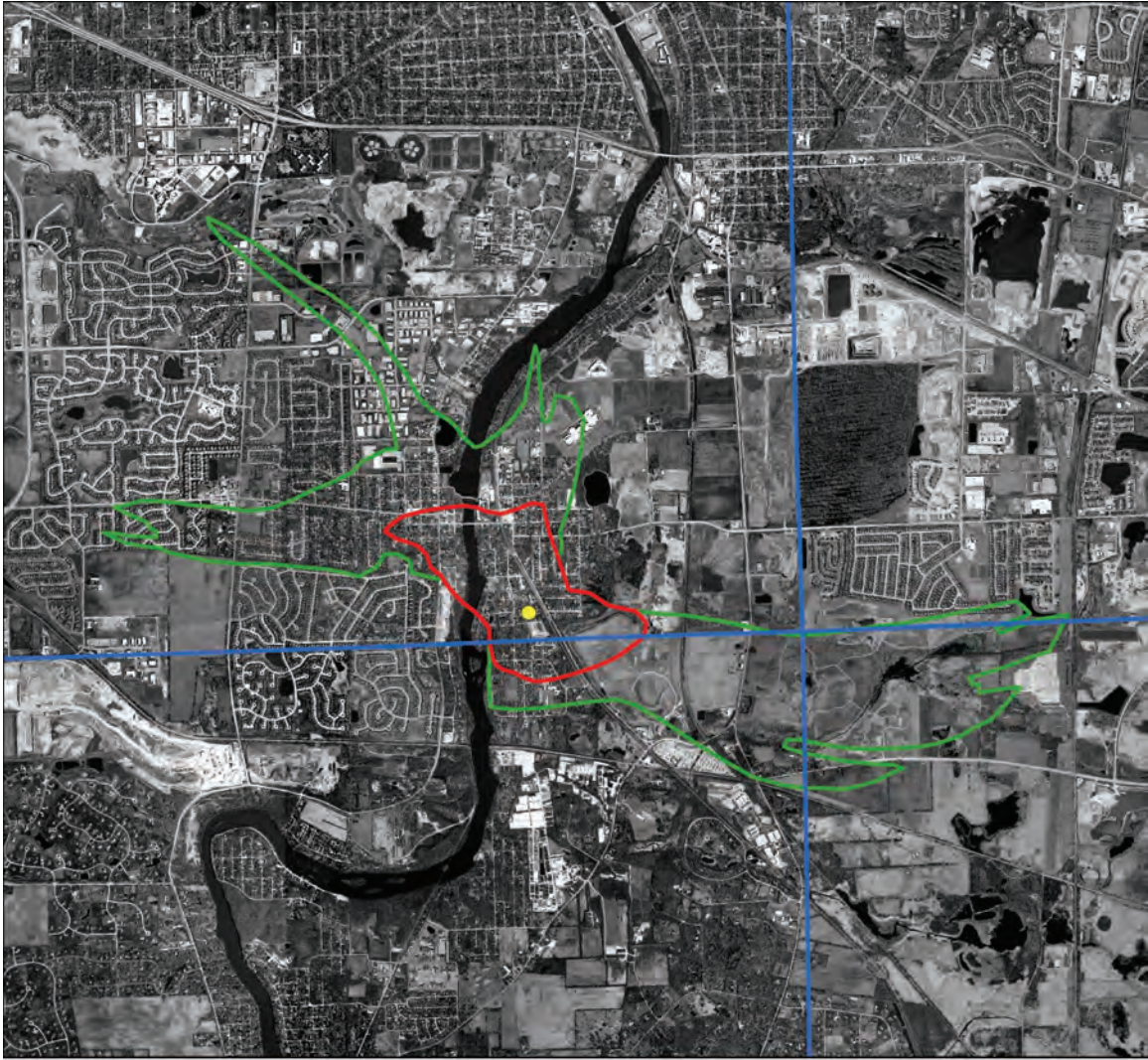


- Well location
- Five-year capture zone
- Twenty-year capture zone
- Township boundary

Figure H-20. Five- and twenty-year capture zones of South Elgin well 4 superimposed on 2005 aerial photography.



Figure H-21. Five- and twenty-year capture zones of South Elgin well 5 superimposed on 2005 aerial photography.







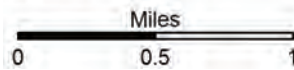
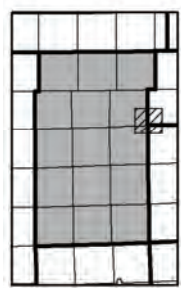
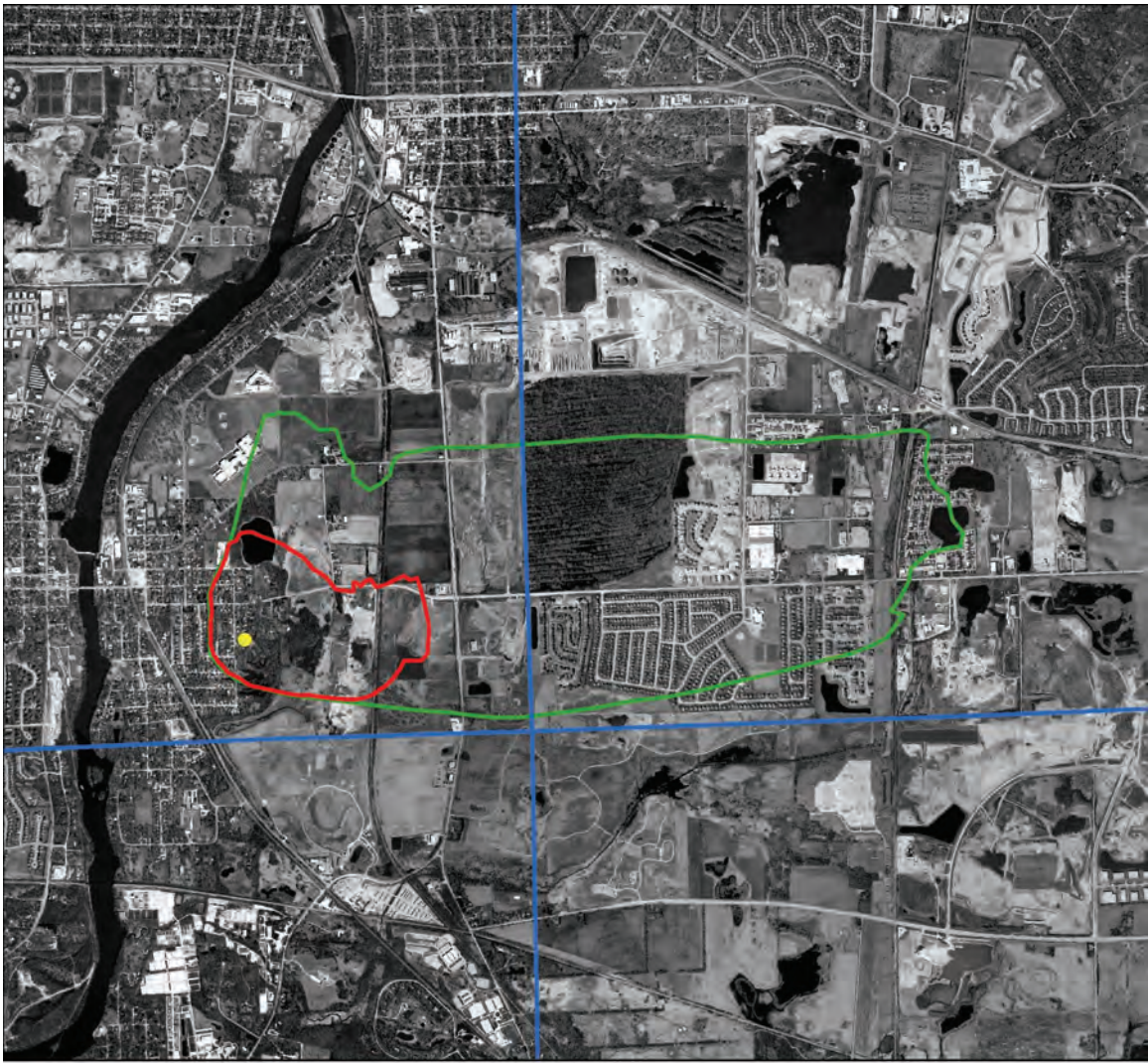
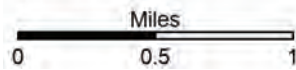
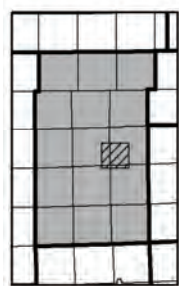
-  Well location
-  Five-year capture zone
-  Twenty-year capture zone
-  Township boundary

Figure H-22. Five- and twenty-year capture zones of South Elgin well 6 superimposed on 2005 aerial photography.



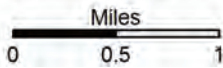
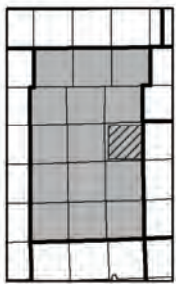
- Well location
- Five-year capture zone
- Twenty-year capture zone
- Township boundary

Figure H-23. Five- and twenty-year capture zones of South Elgin well 10 superimposed on 2005 aerial photography.



- Well location
- Five-year capture zone
- Twenty-year capture zone
- Township boundary

Figure H-24. Five- and twenty-year capture zones of St. Charles well 7 superimposed on 2005 aerial photography.



- Well location
- Five-year capture zone
- Twenty-year capture zone
- Township boundary

Figure H-25. Five- and twenty-year capture zones of St. Charles well 9 superimposed on 2005 aerial photography.

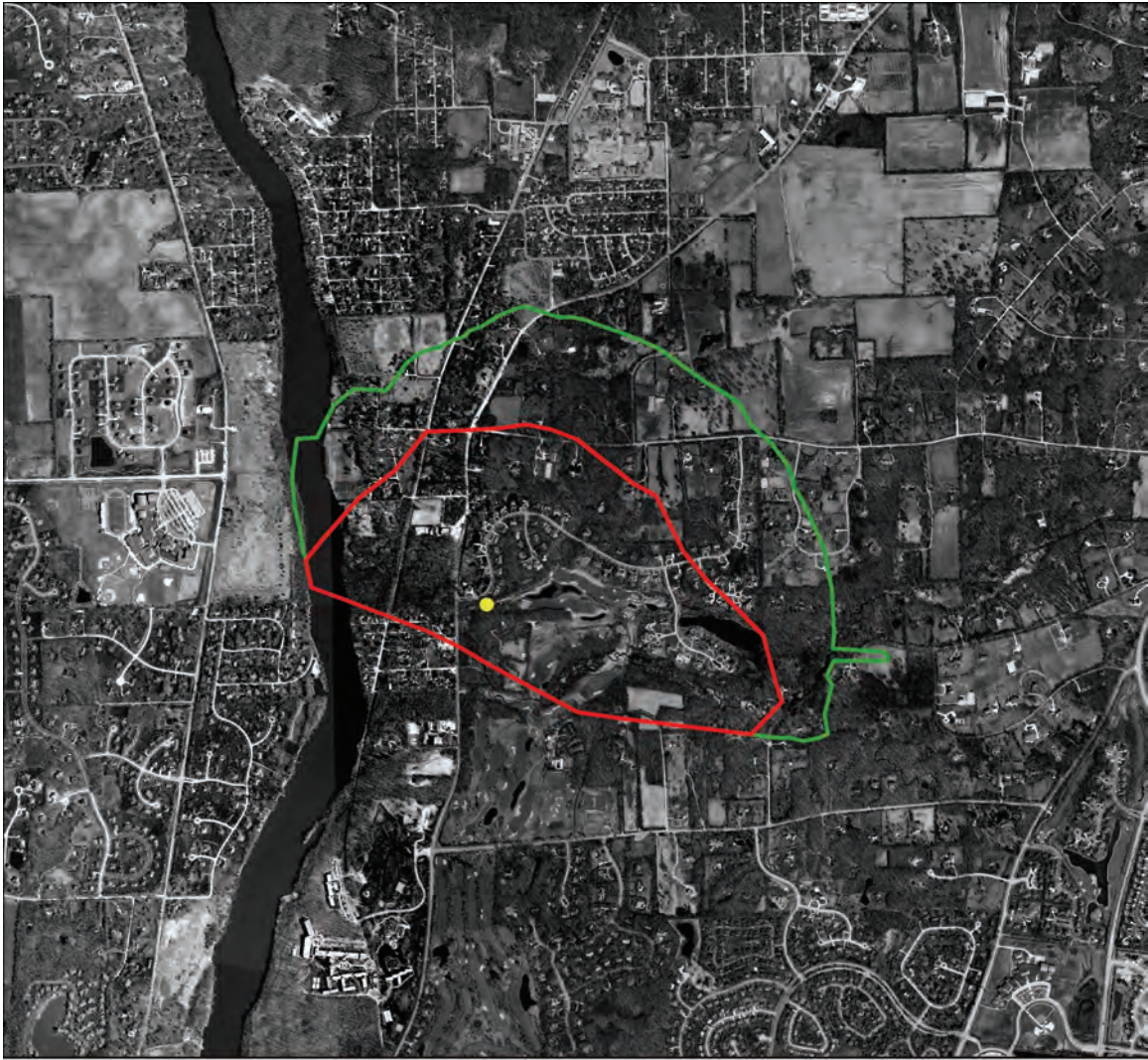


Figure H-26. Five- and twenty-year capture zones of St. Charles 11 superimposed on 2005 aerial photography.

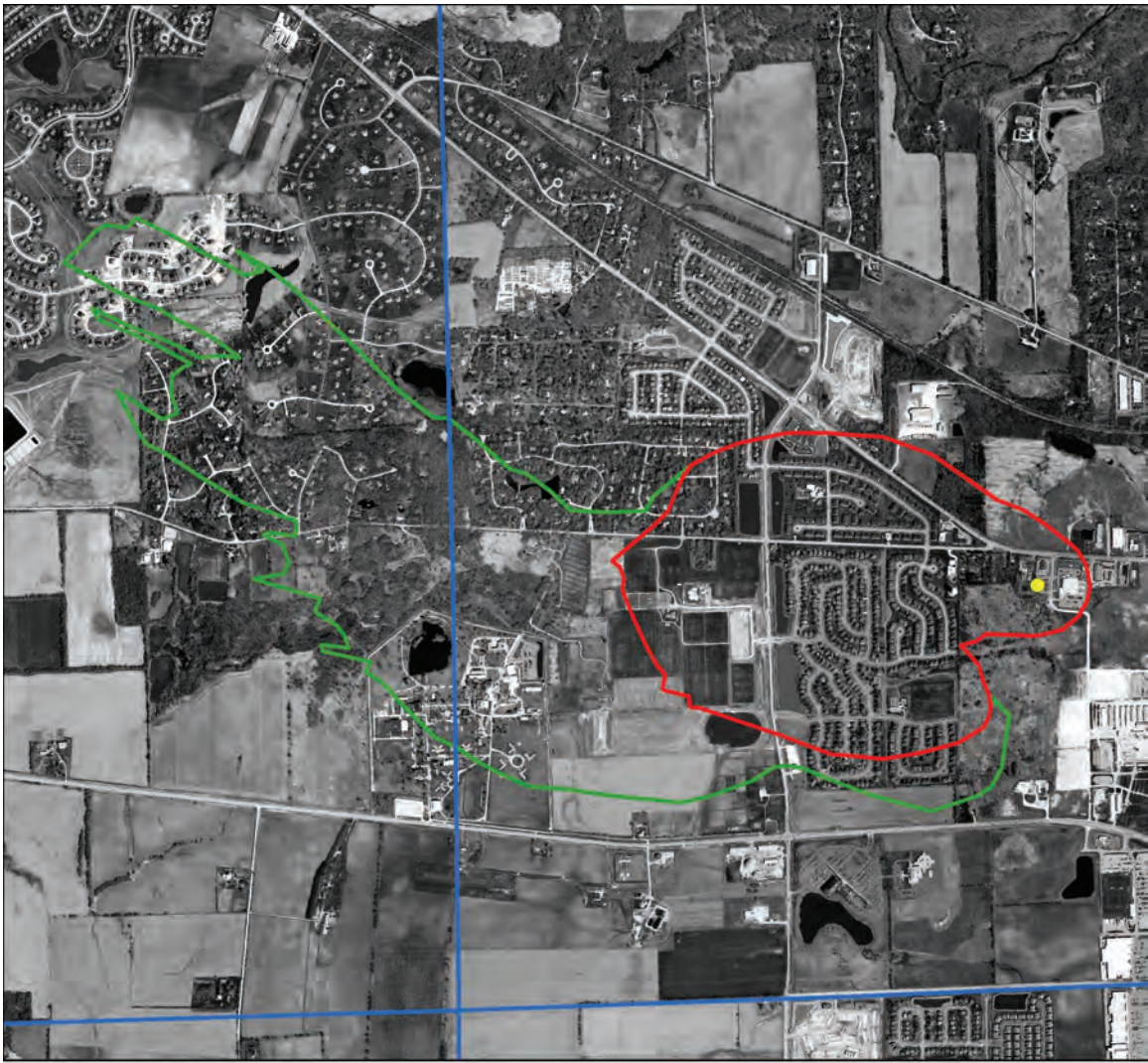


Figure H-27. Five- and twenty-year capture zones of St. Charles well 13 superimposed on 2005 aerial photography.



Figure H-28. Five- and twenty-year capture zones of Sugar Grove well 2 superimposed on 2005 aerial photography.



Figure H-29. Five- and twenty-year capture zones of Sugar Grove well 7 superimposed on 2005 aerial photography.