

Local Climatological Data
Champaign-Urbana, IL - 118740

Illinois State Water Survey
Water Survey Research Center

October 2006

DATE	TEMPERATURE			PRECIP (in)	SNOW (in)		WEATHER TYPES	WIND				DEGREE DAYS	
	Max	Min	Mean		Amnt	Depth		Dir	Speed (mph)	Peak Gust	Gust Dir	Heat	Cool
1	84	47	66	0.00	0.0	0		W	3.1	14.1	W	0	1
2	89	53	71	0.00	0.0	0		S	5.7	16.6	SW	0	6
3	89	63	76	0.39	0.0	0	TRW	S	5.5	19.4	NE	0	11
4	88	58	73	0.00	0.0	0		SW	7.0	25.1	NE	0	8
5	65	47	56	0.04	0.0	0	TRW-	NE	5.3	14.8	NE	9	0
6	66	42	54	0.00	0.0	0		NE	2.5	10.7	NE	11	0
7	73	40	57	0.00	0.0	0		N	1.5	8.6	SE	8	0
8	79	41	60	0.00	0.0	0		CALM	1.3	8.8	SW	5	0
9	80	48	64	0.00	0.0	0		CALM	1.9	15.2	E	1	0
10	68	54	61	0.00	0.0	0			M	7.4	W	4	0
11	62	31	47	0.23	0.0	0	RW, RW-	W	7.1	24.6	W	18	0
12	46	28	37	0.07	0.0	0	RW	W	7.4	24.6	W	28	0
13	53	29	41	T	T	0	S-		M	M		24	0
14	54	30	42	0.00	0.0	0		W	5.7	22.3	W	23	0
15	56	27	42	0.00	0.0	0		SE	2.0	9.0	SW	23	0
16	54	49	52	T	0.0	0	RW-	SE	5.3	19.1	E	13	0
17	61	51	56	2.15	0.0	0	RW-, RW, RW+, F(W	5.6	21.9	SW	9	0
18	67	45	56	0.00	0.0	0	F(AM)	SW	3.4	17.5	W	9	0
19	45	40	43	T	0.0	0	L-	N	3.8	15.3	N	22	0
20	58	31	45	T	0.0	0	L-	SW	4.2	14.5	SW	20	0
21	65	41	53	0.00	0.0	0		S	4.1	15.5	SW	12	0
22	48	34	41	0.13	0.0	0	RW-	W	8.5	24.2	W	24	0
23	43	33	38	0.00	0.0	0		W	4.9	15.5	W	27	0
24	48	29	39	0.00	0.0	0		NW	2.3	8.2	W	26	0
25	53	29	41	0.00	0.0	0		SE	3.6	13.0	SE	24	0
26	48	41	45	0.40	0.0	0	RW, RW-	SE	5.0	11.3	E	20	0
27	47	41	44	0.19	0.0	0	RW-	NE	5.7	18.4	N	21	0
28	54	37	46	0.16	0.0	0	RW, RW-	W	7.6	26.8	W	19	0
29	62	35	49	0.00	0.0	0		NE	3.4	11.2	W	16	0
30	73	41	57	0.00	0.0	0		S	9.3	32.2	S	8	0
31	60	35	48	0.02	0.0	0	RW-		M	M		17	0
AVG/TOT	62.5	40.3	51.4	3.78	0.0			W	4.7			441	26
DEP.	-2.7	-3.0	-2.9	+0.97	-0.1			SW	-0.9			+95	+17

NUMBER OF DAYS and DEPARTURE

	MAX TEMP		MIN TEMP		PRECIPITATION					SNOW
	>=90	<=32	<=32	<=0	>T	>=.01	>=.10	>=.50	>=1.00	>=1.0
TOTAL	0	0	8	0	14	10	7	1	1	0
DEP	0	0	+4	0	+1	+2	-1	0	0	0

	WEATHER TYPES										SEASONAL DEGREE DAYS		PRECIPITATION	
	R	L	S	Z	IP	A	T	F	D	H	BS	HEATING	COOLING	JAN-October
TOTAL	11	2	1	0	0	0	2	2	0	0	0	533	1064	30.85
DEP	+1	-2			0	0	-2					+102	+78	-3.99

Averages based on 1971-2000 data. Temp midnight-midnight, Precip and Snow at 8 am LST M = Missing

WEATHER TYPES:

R = Rain Z = Freezing rain/drizzle D = Dust
L = Drizzle IP = Ice pellets (sleet) H = Haze
S = Snow A = Hail BS = Blowing snow
T = Thunder F = Fog RW = Rainshower SW = Snowshower

PRECIP INTENSITY

- Light Precip amount "T" =Trace
Moderate
+ Heavy

DEGREE DAYS Heat and Cool base 65F. Corn Growing base 50F, ceiling 86F. Heating DD season July-June. Cool and Corn DD season January-December.

WIND: DIR is the 24 hr prevailing direction (greatest number of hours). Speed is the daily average of 24 hourly average wind speeds.

Champaign-Urbana Weather Highlights – October 2006

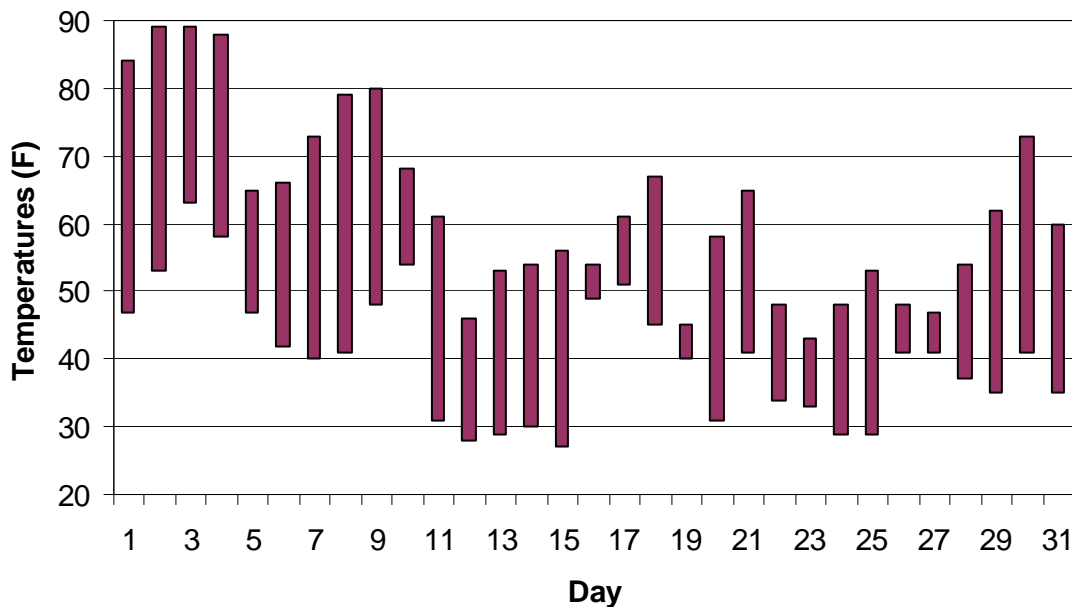
ILLINOIS STATE WATER SURVEY

Jim Angel, State Climatologist
2204 Griffith Drive
Champaign, IL 61820
jimangel@uiuc.edu

Temperature – ranged from 27°F on October 15 to 89°F on October 2 and 3. The average monthly high of 62.5°F was 2.7°F below normal and the 19th coolest since October records began in 1888. The average monthly low of 40.3°F was the 20th coolest on record. The average monthly mean of 51.4°F was the 14th coolest on record.

Precipitation – no daily records were set this month. The monthly precipitation total was 3.78”, 0.97” above normal. Historically, October monthly precipitation ranges from 0.16” in 1964 to 9.01” in 1941.

Champaign-Urbana, October 2006
Daily Temperature Range



Additional Information

Additional information for October can be found at the Illinois Climate Network site that is collocated with our cooperative weather observer site. This automated station collects temperature, wind, soil temperature, evaporation, humidity, and solar radiation data. These data are usually posted several days after the end of the month at:

<http://www.sws.uiuc.edu/warm/data/2006/October/Champaign.txt>

JRA

The daily climate statistics are available by touch-tone phone. Call 333-8890 and select menu option 1. The recording is updated daily Monday through Friday by 8:30 a.m. For this and other climate data, visit the State Climatologist web site at <http://www.sws.uiuc.edu/atmos/statecli/>