

Local Climatological Data Champaign-Urbana, IL - 118740

Illinois State Water Survey
Water Survey Research Center

December 2006

DATE	TEMPERATURE			PRECIP (in)	SNOW (in)		WEATHER TYPES	WIND				DEGREE DAYS	
	Max	Min	Mean		Amnt	Depth		Dir	Speed (mph)	Peak Gust	Gust Dir	Heat	Cool
1	40	16	28	1.26	0.5	1	RW,Z,SW		M	M		37	0
2	32	14	23	T	T	T	SW-,BS		M	M		42	0
3	20	10	15	0.00	0.0	T			M	M		50	0
4	28	8	18	0.00	0.0	T		SW	7.9	21.7	SW	47	0
5	33	10	22	0.00	0.0	T			M	M		43	0
6	39	30	35	0.00	0.0	T			M	M		30	0
7	18	9	14	T	T	T	SW-		M	M		51	0
8	27	5	16	0.00	0.0	0			M	M		49	0
9	42	19	31	0.00	0.0	0			M	M		34	0
10	46	24	35	0.00	0.0	0		S	8.1	18.6	S	30	0
11	46	37	42	0.09	0.0	0	RW-	SE	4.8	12.0	S	23	0
12	56	40	48	0.65	0.0	0	RW-,RW,F(PM)	S	7.5	20.2	W	17	0
13	55	34	45	0.05	0.0	0	RW-,TRW-,F		M	M		20	0
14	59	41	50	0.00	0.0	0	F(AM)		M	M		15	0
15	46	31	39	0.00	0.0	0			M	M		26	0
16	55	33	44	0.00	0.0	0		S	6.8	17.7	S	21	0
17	54	41	48	T	0.0	0	L-, F(PM)		M	M		17	0
18	45	32	39	0.22	0.0	0	RW, F		M	M		26	0
19	40	26	33	0.00	0.0	0			M	M		32	0
20	42	25	34	0.00	0.0	0			M	M		31	0
21	52	41	47	0.73	0.0	0	RW,RW-,L,F		M	M		18	0
22	52	37	45	0.69	0.0	0	RW,RW-		M	M		20	0
23	41	33	37	0.03	0.0	0	RW-		M	M		28	0
24	36	26	31	0.00	0.0	0			M	M		34	0
25	41	32	37	0.00	0.0	0			M	M		28	0
26	36	26	31	T	T	T	RW-,SW-	NW	6.2	24.1	N	34	0
27	42	26	34	0.00	0.0	0		CALM	2.6	13.9	S	31	0
28	51	33	42	0.00	0.0	0		S	4.5	16.0	S	23	0
29	58	31	45	0.00	0.0	0			M	M		20	0
30	55	43	49	0.00	0.0	0			M	M		16	0
31	61	41	51	0.96	0.0	0	RW+, L		M	M		14	0
AVG/TOT	43.5	27.5	35.5	4.68	0.5			S	6.1			907	0
DEP.	+6.7	+5.3	+6.0	+1.92	-5.6			W	-1.3			-191	0

NUMBER OF DAYS and DEPARTURE

	MAX TEMP				MIN TEMP				PRECIPITATION					SNOW	
	>=90	<=32	<=32	<=0	>T	>=.01	>=.10	>=.50	>=1.00						>=1.0
TOTAL	0	5	19	0	13	9	6	5	1						0
DEP	0	-5	-7	-2		-2	0	+3	0						-2

	WEATHER TYPES										SEASONAL DEGREE DAYS		PRECIPITATION	
	R	L	S	Z	IP	A	T	F	D	H	BS	HEATING	COOLING	JAN-December
TOTAL	10	3	4	1	0	0	1	6	0	0	1	2071	1064	37.88
DEP	+2	0	-5	-2		0	0	0				-169	+78	-3.17

Averages based on 1971-2000 data. Temp midnight-midnight, Precip and Snow at 8 am LST M = Missing

WEATHER TYPES:

R = Rain Z = Freezing rain/drizzle D = Dust
 L = Drizzle IP = Ice pellets (sleet) H = Haze
 S = Snow A = Hail BS = Blowing snow
 T = Thunder F = Fog RW = Rainshower SW = Snowshower

PRECIP INTENSITY

- Light Precip amount "T" =Trace
 Moderate
 + Heavy

DEGREE DAYS Heat and Cool base 65F. Corn Growing base 50F, ceiling 86F. Heating DD season July-June. Cool and Corn DD season January-December.

WIND: DIR is the 24 hr prevailing direction (greatest number of hours). Speed is the daily average of 24 hourly average wind speeds.

Champaign-Urbana Weather Highlights – December 2006

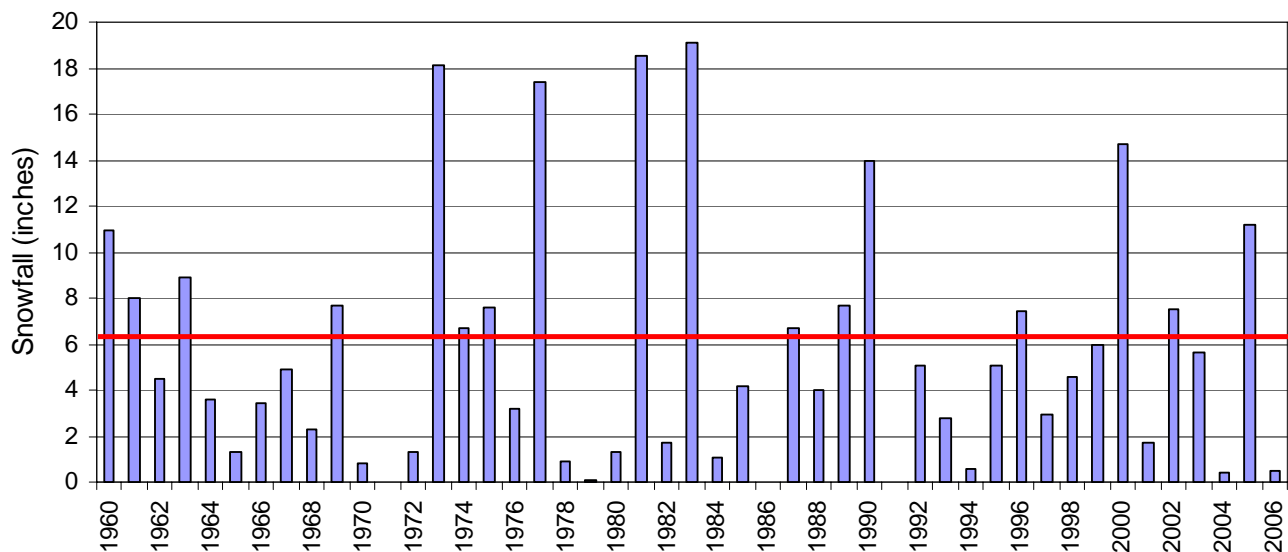
ILLINOIS STATE WATER SURVEY

Jim Angel, State Climatologist
2204 Griffith Drive
Champaign, IL 61820
jimangel@uiuc.edu

Temperature – ranged from 5°F on December 8 to 61°F on December 31. The average monthly high of 43.5°F was the 12th warmest on record. The average monthly low of 27.5°F was the 16th warmest on record (tied with 1891). The average monthly mean temperature of 35.5°F was the 14th warmest on record (tied with 1940 and 1956).

Precipitation – no daily records were set this month. The monthly precipitation total of 4.68” was 1.92” above normal and the 14th wettest on record. On the other hand, the monthly snowfall total of 0.5” was the 6th lowest snowfall total on record (tied with 1923 and 1928). Since snowfall records began in 1903, four Decembers have received zero snowfall (1912, 1971, 1986 and 1991). Below is a bar plot of December snowfall totals since 1960, showing the large year to year variability in snowfall.

Champaign-Urbana December Snowfall
Red Line: 1971-2000 Average December Snowfall



Additional Information

Additional information for December can be found at the Illinois Climate Network site that is collocated with our cooperative weather observer site. This automated station collects temperature, wind, soil temperature, evaporation, humidity, and solar radiation data. These data are usually posted several days after the end of the month at: <http://www.sws.uiuc.edu/warm/data/2006/December/Champaign.txt>

JRA

The daily climate statistics are available by touch-tone phone. Call 333-8890 and select menu option 1. The recording is updated daily Monday through Friday by 8:30 a.m. For this and other climate data, visit the State Climatologist web site at <http://www.sws.uiuc.edu/atmos/statecli/>