

Local Climatological Data
Champaign-Urbana, IL - 118740

Illinois State Water Survey
Water Survey Research Center

June 2004

DATE	TEMPERATURE			PRECIP (in)	SNOW (in)		WEATHER TYPES	WIND				DEGREE DAYS		
	Ma	Min	Mean		Amnt	Depth		Dir	Speed (mph)	Peak	Gust Dir	Heat	Cool	Cor
1	80	54	67	T	0.0	0	R-	SW	7.1	27.1	W	0	2	17
2	71	55	63	0.12	0.0	0	TRW	W	4.8	20.2	W	2	0	13
3	74	53	64	0.00	0.0	0		NE	4.0	14.2	NE	1	0	14
4	78	49	64	0.00	0.0	0		N	2.5	9.8	NE	1	0	14
5	79	58	69	0.00	0.0	0		SW	2.5	12.2	NW	0	4	19
6	83	62	73	T	0.0	0	R-	SW	4.1	13.0	S	0	8	23
7	87	60	74	0.00	0.0	0		S	5.8	17.7	S	0	9	23
8	91	70	81	0.00	0.0	0		SW	6.7	17.2	SW	0	16	28
9	80	69	75	0.04	0.0	0	R	SW	5.3	17.8	SW	0	10	25
10	77	68	73	2.21	0.0	0	TRW+ R	SE	2.6	19.8		0	8	23
11	88	70	79	0.23	0.0	0	R	SW	4.2	17.5		0	14	28
12	90	68	79	0.02	0.0	0	R	SW	4.2	15.7		0	14	27
13	84	66	75	0.00	0.0	0		S	5.7	20.2	W	0	10	25
14	87	64	76	0.00	0.0	0		SW	3.7	15.9	W	0	11	25
15	83	67	75	0.40	0.0	0	TRW	NE	2.4	14.3	NW	0	10	25
16	83	70	77	0.42	0.0	0	TRW	SE	2.8	16.9	W	0	12	27
17	83	70	77	0.00	0.0	0		W	5.0	14.1		0	12	27
18	83	66	75	0.00	0.0	0	F(A.M.)	N	2.9	16.3		0	10	25
19	70	52	61	0.00	0.0	0		N	4.7	15.9	NE	4	0	11
20	73	49	61	0.01	0.0	0	RW-	SW	2.7	10.5	SW	4	0	12
21	74	56	65	0.01	0.0	0	RW-	S	4.0	15.8	S	0	0	15
22	73	55	64	0.00	0.0	0	F(A.M.)	W	2.7	11.9	NW	1	0	14
23	80	51	66	0.00	0.0	0		SW	4.4	14.8	S	0	1	16
24	81	56	69	0.06	0.0	0	R	SW	5.1	15.8	SW	0	4	19
25	70	49	60	0.24	0.0	0	TRW+ R	N	3.4	14.0	N	5	0	10
26	76	52	64	0.00	0.0	0		W	3.7	14.8	W	1	0	14
27	78	54	66	0.01	0.0	0	RW-	W	4.0	14.4	W	0	1	16
28	77	58	68	0.00	0.0	0		NW	2.5	10.3	N	0	3	18
29	79	53	66	0.00	0.0	0		W	1.9	11.4	W	0	1	16
30	82	56	69	0.00	0.0	0		SE	1.5	9.3	SE	0	4	19
AVG/TOT	79.8	59.3	69.6	3.77	0.0	0.0		SW	3.9			19	164	588
DEP.	-2.8	-1.6	-2.2	-0.44	0.0	0.0		SW	-1.6			0	-54	-46

NUMBER OF DAYS and DEPARTURE

	MAX TEMP				PRECIPITATION					SNOW
	>=90	<=32	<=32	<=0	>	>=.01	>=.10	>=.50	>=1.0	>=1.0
TOTAL	2	0	0	0	-01	-01	6	1	1	0
DEP	-4	0	0	0		+2	0	-2	0	0

	WEATHER TYPES											SEASONAL DEGREE DAYS			PRECIPITATION
	R	L	S	Z	IP	A	T	F	D	H	BS	HEATING	COOLING	CORN	JAN-June
TOTAL	.01	0	0	0	0	0	5	2	0	3	0	5371	307	1488	20.69
DFP	+3	-3	0		-1	-1	0					-454	+11	+119	+0.92

Averages based on 1971-2000 data. All data midnight-midnight. Snow depth at 7am LST M = Missing

WEATHER TYPES:

R = Rain Z = Freezing rain/drizzle D = Dust
L = Drizzle IP = Ice pellets (sleet) H = Haz
S = Snow A = Hai BS = Blowing snow
T = Thunder F = Fog RW = Rainshower SW = Snowshower

PRECIP INTENSITY:

- Light Precip amount "T" =Trace
Moderate
+ Heavy

DEGREE DAYS: Heat and Cool base 65F. Corn Growing base 50F, ceiling 86F. Heating DD season July-June. Cool and Corn DD season January-December.

Champaign-Urbana Weather Highlights – June 2004

ILLINOIS STATE WATER SURVEY

Jeff Angeloni and Jim Angel, Weather Observers
2204 Griffith Drive
Champaign, IL 61820
wxobsrvr@sws.uiuc.edu

Temperature

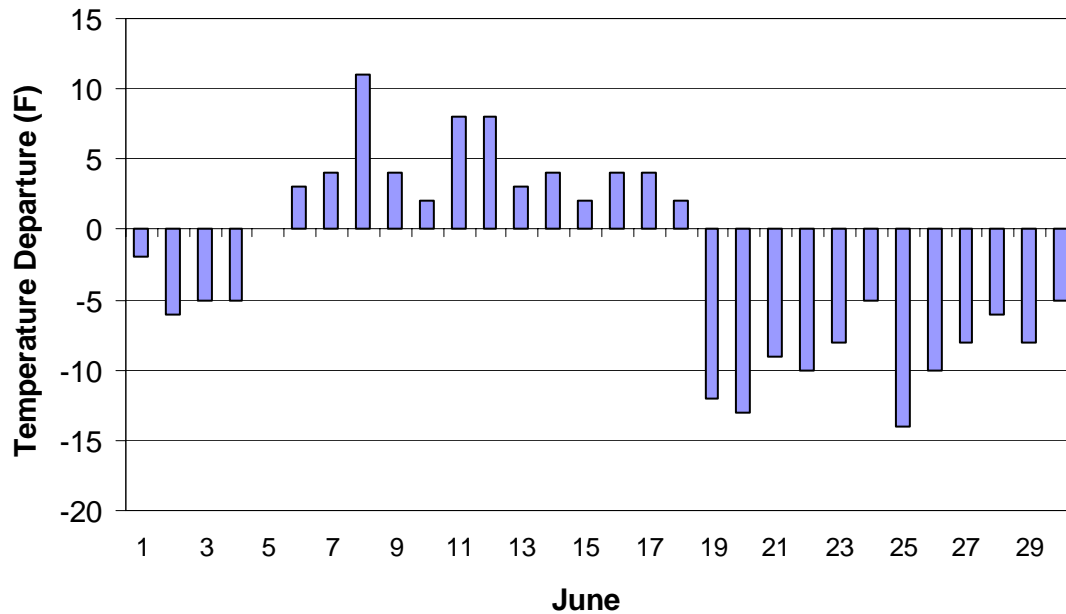
- ⚡ No temperature records were set in June. However, the outstanding feature this month was the string of significantly below-normal temperatures from June 19-30 (see figure below).

Precipitation

- ◆ No precipitation records were set in June.

New Climate Atlas of Illinois - see next page for more information.

Champaign-Urbana



JRA

The daily climate statistics are available by touch-tone phone. Call 333-8890 and select menu option 1. The recording is updated daily Monday through Friday by 8:00 a.m. For this and other climate data, visit the State Climatologist web site at <http://www.sws.uiuc.edu/atmos/statecli/>

New Climate Atlas of Illinois: More data and information are available about the climate of Illinois than any other area in the world. The *Climate Atlas of Illinois* focuses on climate conditions over the past 100+ years of high-quality, extensive climate data collection by the National Weather Service and by the Illinois State Water Survey through numerous extensive, unique field measurements since 1947.

Climate is critical to Illinois' economy, environmental conditions, and human health. Illinois has a continental location far from any oceans and has wide extremes of temperature, precipitation, and storms, and these extremes occur over days, weeks, months, and years.

With ten chapters that include nearly 300 maps and graphs, and more than 80 photographs; in addition to an extensive bibliography, a glossary, and appendices with climatological data for 11 locations, *Climate Atlas of Illinois* will serve a diverse audience. The general public will find answers about all aspects of climate, including records of where in Illinois it is warmest and wettest, and how much snow their hometown annually receives. Others who will find the atlas useful are scientists and students interested in assessing the climate and its effects on people, places, the environment, and economic activities. Those involved in design/planning of weather-sensitive towers and buildings, crops, and activities also will find the atlas to be a valuable resource.

Individual chapters address what controls our climate and historical climate periods; temperatures and precipitation, including snowfall; the statewide energy budget and wind conditions; special climate conditions caused by Lake Michigan, the southern hills, large cities, and human activities; atmospheric quality, including acid rain; climate extremes, such as droughts, cold winters, and various kinds of storms; outstanding weather and climate events of the 20th Century; weather conditions and air masses; and climate issues, such as global warming.

The *Climate Atlas of Illinois* is now available for purchase from the Illinois State Water Survey. The cost is \$20, plus \$7 for shipping and handling.

No shipping or handling will be charged to copies purchased and picked up at the Water Survey. To order by phone, you may call (217) 333-8888 and use a credit card. You may also mail a payment by Check, Money Order, or Cashier's Check to:

Illinois State Water Survey
Illinois Climate Atlas
2204 Griffith Dr.
Champaign, IL 61820

For more information on purchasing *Climate Atlas of Illinois*, email Gloria Marsh at: gloria@sws.uiuc.edu.

Check out <http://www.sws.uiuc.edu/docs/climateatlas/> for more details, including the table of contents.

The daily climate statistics are available by touch-tone phone. Call 333-8890 and select menu option 1. The recording is updated daily Monday through Friday by 8:00 a.m. For this and other climate data, visit the State Climatologist web site at <http://www.sws.uiuc.edu/atmos/statecli/>