

Local Climatological Data
Champaign-Urbana, IL - 118740

Illinois State Water Survey
Water Survey Research Center

June 2003

DATE	TEMPERATURE			PRECIP (in)	SNOW (in)		WEATHER TYPES	WIND				SKY COVER	DEGREE DAYS		
	Max	Min	Mean		Amnt	Depth		Dir	Speed (mph)	Peak Gust	Gust Dir		Heat	Cool	Corn
1	67	42	55	0.00	0.0	0		NE	2.6	10.5	N	CLR	10	0	9
2	65	46	56	0.30	0.0	0	RW-	SE	3.1	15.4	SE	PC	9	0	8
3	56	51	54	0.12	0.0	0	RW-,L-	NE	4.8	16.7	N	CLDY	11	0	4
4	71	52	62	0.00	0.0	0		N	3.8	12.5	N	CLDY	3	0	12
5	77	49	63	0.00	0.0	0		W	2.4	10.8	NE	CLR	2	0	14
6	71	51	61	0.29	0.0	0	R	SE	2.6	10.5	SE	CLDY	4	0	11
7	75	53	64	0.00	0.0	0	F	W	2.1	12.1	W	PC	1	0	14
8	73	59	66	0.00	0.0	0		W	8.1	30.0	W	PC	0	1	16
9	80	55	68	0.00	0.0	0		W	4.9	17.4	SW	PC	0	3	18
10	76	59	68	0.22	0.0	0	TRW,RW-	SW	7.0	28.5	SW	CLDY	0	3	18
11	83	60	72	0.96	0.0	0	TRW+,RW+,RW	S	3.8	13.8	SW	CLDY	0	7	22
12	78	60	69	0.01	0.0	0	RW-,F	SW	2.9	10.4	W	CLDY	0	4	19
13	75	65	70	0.33	0.0	0	TRW+,RW-,F	SW	2.3	19.0	W	CLDY	0	5	20
14	80	63	72	0.00	0.0	0	F	N	4.3	14.3	NE	CLDY	0	7	22
15	84	60	72	0.00	0.0	0		NE	3.7	12.3	E	PC	0	7	22
16	84	62	73	0.00	0.0	0		NE	3.5	12.6	NE	CLR	0	8	23
17	84	62	73	0.00	0.0	0		NW	2.6	12.9	NW	PC	0	8	23
18	87	59	73	0.00	0.0	0		W	2.9	16.6	NE	PC	0	8	23
19	77	54	66	0.36	0.0	0	RW	N	6.0	18.5	N	PC	0	1	16
20	77	51	64	0.00	0.0	0		NE	3.4	15.0	N	CLR	1	0	14
21	82	52	67	0.00	0.0	0		SE	1.3	7.7	SE	CLR	0	2	17
22	84	56	70	0.00	0.0	0		S	2.5	13.7	W	CLR	0	5	20
23	87	57	72	0.00	0.0	0		S	3.5	13.3	S	CLR	0	7	22
24	90	62	76	0.00	0.0	0		S	3.8	13.4	S	CLR	0	11	24
25	91	63	77	0.00	0.0	0		S	5.1	18.4	W	PC	0	12	25
26	75	58	67	0.11	0.0	0	RW-	W	5.5	19.7	W	PC	0	2	17
27	82	54	68	0.00	0.0	0		SW	5.3	16.9	SW	CLR	0	3	18
28	84	61	73	0.02	0.0	0	RW-	SW	5.5	21.4	S	PC	0	8	23
29	83	66	75	0.32	0.0	0	TRW+,TRW,A(1")	SW	3.6	14.6	W	PC	0	10	25
30	84	65	75	0.00	0.0	0		NE	2.1	9.5	N	CLR	0	10	25
AVG/TOT	78.7	56.9	67.8	3.04	0.0			NE	3.8				41	132	544
DEP.	-3.9	-4.0	-4.0	-1.17	0.0			SW	-1.7				+22	-86	-90

NUMBER OF DAYS and DEPARTURE

	MAX TEMP				MIN TEMP				PRECIPITATION					SNOW	SKY COVER		
	>=90	<=32	<=32	<=0	>	>=.01	>=.10	>=.50	>=1.00	>=1.0	CLR	PC	CLDY				
TOTAL	2	0	0	0	11	11	9	1	0	0	10	12	8				
DEP	-4	0	0	0	+1	+3	-2	-1		0	0	0	0				

	WEATHER TYPES											SEASONAL DEGREE DAYS			PRECIPITATION
	R	L	S	Z	IP	A	T	F	D	H	BS	HEATING	COOLING	CORN	JAN-June
TOTAL	11	1	0	0	0	1	4	4	0	0	0	5875	175	1352	13.30
DFF	0	-2				0	-2	+2				+50	-121	-17	-6.47

Averages based on 1971-2000 data. The daily sky condition is determined by the prevailing sky condition of three observations made between 7am and 7pm LST. Snow depth at 7am LST. All other data midnight-midnight. M = Missing

WEATHER TYPES:

R = Rain
L = Drizzle
S = Snow
T = Thunder
Z = Freezing rain/drizzle
IP = Ice pellets (sleet)
A = Hail
F = Fog
D = Dust
H = Haze
BS = Blowing snow
RW = Rainshower
SW = Snowshower

PRECIP INTENSITY

- Light
Moderate
+ Heavy
Precip amount "T" = Trace

DEGREE DAYS Heat and Cool base 65F. Corn Growing base 50F, ceiling 86F. Heating DD season July-June. Cool and Corn DD season January-December.

Champaign-Urbana Weather Highlights – June 2003

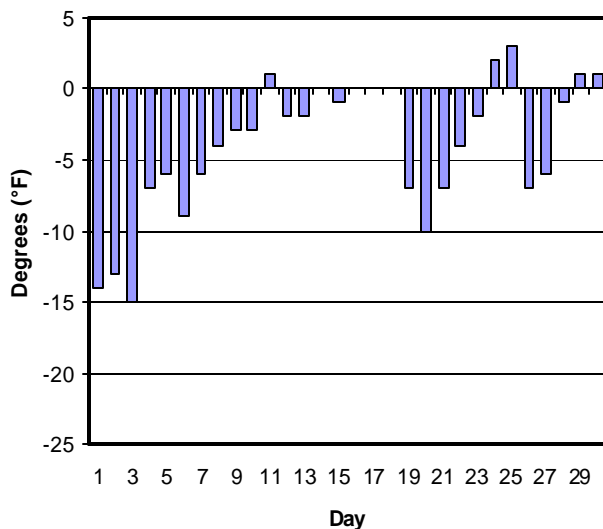
ILLINOIS STATE WATER SURVEY

Maria Peters, Weather Observer
2204 Griffith Drive
Champaign, IL 61820
wxobsrvr@sws.uiuc.edu

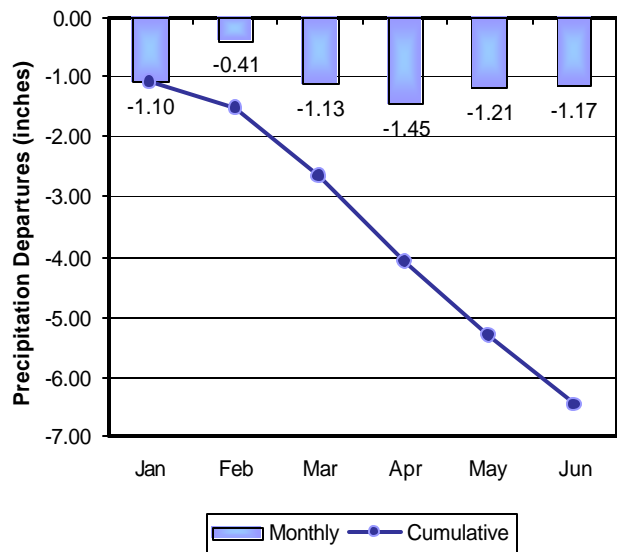
With only five days of above average temperatures and a mean temperature four degrees cooler than average, June 2003 tied with 1945 as the 13th coolest June on record. The coldest June since records began was June 1889, when the average temperature was only 65.1 degrees (2.7 cooler than June 2003).

At 3.04 inches of precipitation, June 2003 was the 46th driest June since 1888. This below-average precipitation continued the dry trend of 2003 and for the year, Champaign-Urbana was 6.47 inches below average. This ranks this year as the 14th driest January – June since 1888. However, due to the highly localized nature of some of the storms that struck the area during the month, these observations are not representative of all areas of the twin cities. For example, observations by the Illinois State Water Survey's Boneyard Precipitation Network (<http://www.sws.uiuc.edu/atmos/boneyard/>) reported a large variation in the precipitation of June 11-12. Reporting sites located in northern half of Champaign reported up to 3.59 inches while a site located in the southwest corner of Champaign reported 0.26 inches. During that same time period, the Water Survey received 0.66 inches. Another localized storm on June 29th dropped a narrow swath of quarter sized hail just along and south of Windsor Road. For the month, the precipitation totals by the Boneyard Network ranged from a high of 5.67 inches (north central Champaign) to 2.20 inches (southwest Champaign).

June 2003 Mean Daily Temperature
Departure from Normal



2003 Monthly Precipitation
Departures from Normal



The daily climate statistics are available by touch-tone phone. Call 333-8890 and select menu option 1. The recording is updated daily Monday through Friday by 8:00 a.m. For this and other climate data, visit the State Climatologist web site at <http://www.sws.uiuc.edu/atmos/statecli/>

The daily climate statistics are available by touch-tone phone. Call 333-8890 and select menu option 1. The recording is updated daily Monday through Friday by 8:00 a.m. For this and other climate data, visit the State Climatologist web site at <http://www.sws.uiuc.edu/atmos/statecli/>