

Local Climatological Data
Champaign-Urbana, IL - 118740

Illinois State Water Survey
Water Survey Research Center

January 2003

DATE	TEMPERATURE			PRECIP (in)	SNOW (in)		WEATHER TYPES	WIND				SKY COVER	DEGREE DAYS	
	Max	Min	Mean		Amnt	Depth		Dir	Speed (mph)	Peak Gust	Gust Dir	COVER	Heat	Cool
1	36	27	32	0.00	0.0	0		NE	10.3	22.5	N	CLR	33	0
2	28	26	27	0.10	2.0	T	S-	NE	6.1	17.8	NE	CLDY	38	0
3	29	16	23	0.00	0.0	2		NW	5.3	14.9	W	PC	42	0
4	32	10	21	0.10	0.8	1	R-,L-,S-,IP-	SE	4.0	11.7	SE	CLDY	44	0
5	35	32	34	T	T	2	L-,SW-,F	NW	4.9	15.8	W	CLDY	31	0
6	36	23	30	0.00	0.0	T		NW	7.2	20.1	N	PC	35	0
7	39	23	31	0.00	0.0	0		SW	11.5	23.5	W	PC	34	0
8	55	34	45	0.00	0.0	0		W	10.9	20.6	SW	CLR	20	0
9	45	31	38	0.00	0.0	0		NW	9.6	30.8	W	PC	27	0
10	31	14	23	T	T	0	SW-	NW	9.4	28.3	W	CLDY	42	0
11	25	9	17	0.00	0.0	0		W	8.9	31.4	W	CLR	48	0
12	34	8	21	0.00	0.0	0		SW	7.2	18.5	S	CLR	44	0
13	33	23	28	0.00	0.0	0		N	6.5	17.6	N	PC	37	0
14	24	13	19	T	T	0	SW-	NW	6.5	19.6	NW	PC	46	0
15	26	8	17	0.00	0.0	0		W	3.8	11.7	NW	CLR	48	0
16	23	9	16	0.13	1.9	1	S-	NE	5.2	15.4	NW	CLDY	49	0
17	19	-4	8	0.00	0.0	2		N	6.8	19.1	N	PC	57	0
18	20	-3	9	0.01	0.5	2	S-	W	8.6	22.0	W	CLDY	56	0
19	35	-2	17	T	T	2	SW-	SW	7.5	19.4	SW	PC	48	0
20	32	17	25	0.00	0.0	2		N	4.1	15.1	N	PC	40	0
21	20	10	15	T	T	1	SW-	N	6.2	16.6	N	PC	50	0
22	15	4	10	T	T	1	SW-	N	6.8	17.6	N	PC	55	0
23	9	-3	3	0.00	0.0	1		NW	7.7	19.1	NW	CLR	62	0
24	14	-5	5	0.00	0.0	1		SW	6.7	17.9	SW	PC	60	0
25	33	9	21	T	T	1	S-	SW	7.7	18.1	SW	CLR	44	0
26	27	-2	13	0.05	1.0	2	S-	NW	7.7	24.3	NW	PC	52	0
27	18	-7	6	0.00	0.0	2		S	5.5	19.8	S	CLDY	59	0
28	37	16	27	0.13	0.3	2	R-,IP-,S-	SW	4.7	12.4	S	CLDY	38	0
29	32	23	28	0.03	0.6	2	S-,SW-	N	5.7	16.0	N	CLDY	37	0
30	32	12	22	0.00	0.0	1	F	S	4.1	13.7	S	CLR	43	0
31	34	30	32	0.24	0.9	1	R-,S-,ZR-	S	9.2	19.1	S	CLDY	33	0
AVG/TOT	29.3	12.9	21.1	0.79	8.0			W	7.0				1352	0
DEP.	-2.7	-3.8	-3.3	-1.10	-0.6			W	-0.9				+93	0

NUMBER OF DAYS and DEPARTURE

	MAX TEMP				MIN TEMP				PRECIPITATION					SNOW	SKY COVER		
	>=90	<=32	<=32	<=0	>	>=.01	>=.10	>=.50	>=1.00	>=1.0	CLR	PC	CLDY				
TOTAL	0	19	30	7	15	8	5	0	0	3	8	13	10				
DEP	0	+3	+1	+3		-2	0	-1	0	0	0	+4	-4				

	WEATHER TYPES											SEASONAL DEGREE DAYS		PRECIPITATION
	R	L	S	Z	IP	A	T	F	D	H	BS	HEATING	COOLING	JAN-January
TOTAL	3	2	15	1	2	0	0	2	0	0	0	3568	0	0.79
DFF	-2	-1	+5	-1		0	-1	-2				+69	0	-1.10

Averages based on 1971-2000 data. The daily sky condition is determined by the prevailing sky condition of three observations made between 7am and 7pm LST. Snow depth at 7am LST. All other data midnight-midnight. M = Missin

WEATHER TYPES:

R = Rain
L = Drizzle
S = Snow
T = Thunder
Z = Freezing rain/drizzle
IP = Ice pellets (sleet)
A = Hail
F = Fog
D = Dust
H = Haze
BS = Blowing snow
RW = Rainshower
SW = Snowshower

PRECIP INTENSITY

- Light
Moderate
+ Heavy

DEGREE DAYS

Heat and Cool base 65F. Corn Growing base 50F, ceiling 86F. Heating DD season July-June. Cool and Corn DD season January-December.

Champaign-Urbana Weather Highlights – January 2003

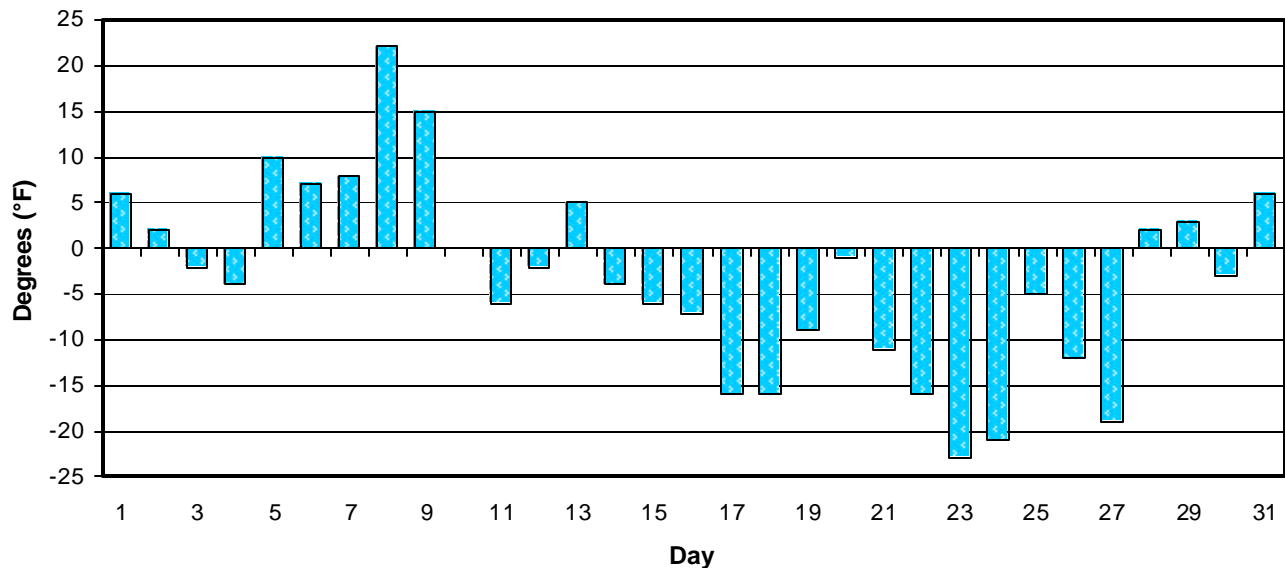
ILLINOIS STATE WATER SURVEY

Maria Peters, Weather Observer
2204 Griffith Drive
Champaign, IL 61820
wxobsrvr@sws.uiuc.edu

With the mean temperature for the month 3.3 degrees below average, January 2003 ended as the 21st coldest January on record. This was the first January since 1997 where the mean temperature was below average. However, no temperature records were set during the month.

As with temperature, precipitation and snowfall were both below average during January 2003 and the month ended as the 18th driest on record. The snowfall of 8.0 inches tied 2003 with 1909 as the 23rd snowiest. The most snowfall on record during a January occurred in 1979, when Champaign-Urbana received 28.3 inches – 2.1 inches more than the ANNUAL snowfall for C-U! The least snow on record occurred in January 1944, when no measurable snow fell. No precipitation or snowfall records were set during the month.

January 2003 Mean Daily Temperature
Departure from Normal



MCP

The daily climate statistics are available by touch-tone phone. Call 333-8890 and select menu option 1. The recording is updated daily Monday through Friday by 8:00 a.m. For this and other climate data, visit the State Climatologist web site at <http://www.sws.uiuc.edu/atmos/statecli/>